



O.H.M.S.

Oklahoma Historical Modelers' Society

NEWSLETTER



Volume 48, Issue 10

October 2018

Coming Events

October 5-- OHMS Meeting. MOM contest.

October 6-- Austin Scale Modelers Society hosts the ASMS Capitol Classic at the Travis County Expo Center, 7311 Decker Lane, Austin, TX. Ian Latham - graphicsdog@gmail.com

October 19-- OHMS Meeting. – Program night. Build Night.

October 20--Chisholm Trail 2018, Midway Baptist Church, 5135 S Broadway, Wichita KS. IPMS Chisholm Trail Scale Modellers, Jeff Cadenhead 316-522-5328 chevymontecarlo18@yahoo.com

October 27--Cajun Modelfest 32 at LSU MiniFarm 4-H Building 101 Efferson Hall, CR4F+HX, Baton Rouge Scale Modelers

November 2--OHMS Meeting. MOM contest

November 16-- OHMS Meeting. Annual Club Auction

Meeting Reports

Business Meeting—September 7

This was the officer election night. There were some contested offices this year, but the current slate was re-elected for another year.

While not, technically, announced at this meeting, the parameters for the next Budget Build (December) are \$10 total investment but the model cost is what was paid. That means a model picked up at the auction for under \$10 qualifies regardless of the MSRP.

.Model of the Month— September 7

This month included one of the quarterly Budget Build contests. We'll lead off with those entries.



Turkish DH-4

Robbie Stingle



Pirate Pistol

James Merritt



Wing Gundam

Eli Blanco



USS Theodore Roosevelt

Ethan Willis



Fi-103 Richenberg

David Paxton



UXB London 1940

Dave Kimbrell

In this group, Robbie picked up the medal with his rendition of the old Airfix kit.

In the regular contest we had the following:



Stephano Nicoli

Steven Foster



X-47B

Rick Jackson



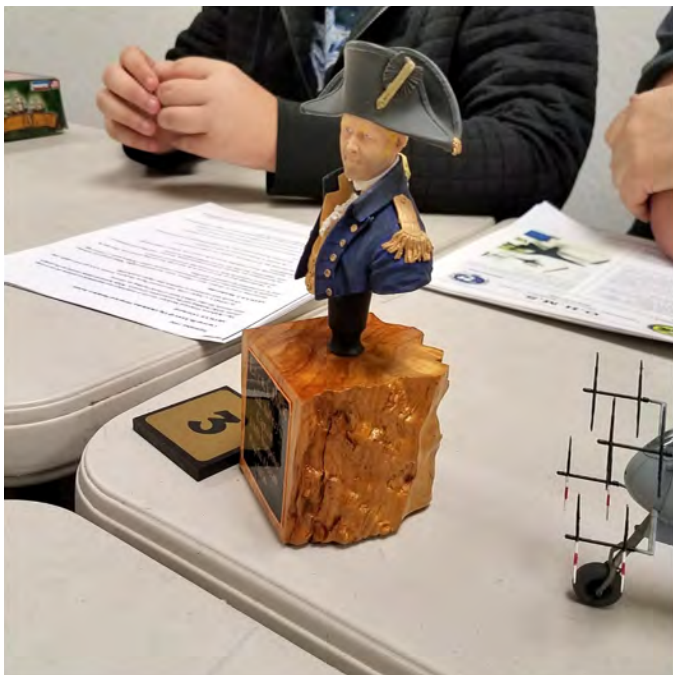
Opel Blitz with 75mm Pak 40

James Staley



'Dinosaur Bone Hunter'

Jeremy Thomas



Lucky Jack Aubry

Dave Kimbrell



GM Sniper Prototype

James Staley



He-219

Troy Petty



Su-30

David Paxton

Steven won this award with the WW I Italian Alpine trooper. That's two entries in a two-month time frame. What's going on here?

And there were some WIP's



Program Night—September 21

This evening was a slide show of models from the IPMS Nationals in Phoenix presented by Rick Jackson. Most of the pictures were ones that didn't make other lists (non-winners, for example).

Club Auction

Each year the club holds a kit auction the second meeting in November. The purpose is to raise operating funds for the coming year. Typically, this is where we get the money to pay for the Model of the Month trophies, fund the sponsorships for Regional and National trophy packages, and other expenses during the year. All items must be paid for in cash or by check at the end of the night.

Members raid their closets and donate kits to the club. All proceeds from the auction go to the club. Sometimes a reserve is placed on a donation if it is really valuable and it's not uncommon for someone to even buy back their kit if it isn't getting a 'fair' price!

To participate, you must bring either two kits for donation (but more is ALWAYS preferable) or pay \$5 'admission'. All purchases have to be paid for that evening, so bring a fat wallet or your checkbook.

In order to make this work, we need to have a record of everything sold, who bought it and for how much. We can then quickly let everyone know how much they owe. Step one is to make a log of the models and that takes time. If at all possible, please provide a list ahead of time to Rick



Jackson so he can build the master list. An Excel spreadsheet e-mailed to rvjackson@sbcglobal.net is the ideal way as it can just be dropped into the master. Even a written list can work. Everyone else is encouraged to get to Hobbytown early on the auction night so the models can be logged in there if they haven't been taken care of ahead of time.

Remember that we will also have a new feature where the kits will be tiered in initial pricing with a minimum bid of \$0.25, \$2 or \$5. They will be marked and put in the appropriate pile so that when they are pulled for bidding everyone will know where to start. This will add more time to the check-in process, so it is even more important to get your lists to Rick ahead of time or arrive early on the night of the auction.



A few thoughts from the Head Chicken...



Specialization is for Insects.

I was recently reading an article which suggests that "following your passion"...often suggested at graduations... is not really good advice. It seems it makes you less successful. Stanford researchers found it implies an easy route to success and overly narrows your focus. Participants of the study who were deeply interested in ONLY one subject were less likely to finish and understand materials in which they had no interest. The implication is those who follow their passion are more likely to give up when faced with tough challenges and road blocks. It created a close-minded attitude and limits thinking. Of course, this article was aimed at business, but it struck a chord with me.



In model building, we face much the same problem. Those who only focus on one type of model are less likely to be a strong part of the group because their interest is so limited. Also, it shows in their work because they fail to look at methods and techniques used in other areas. They find different subjects or models difficult and intimidating, thus avoiding them. It may be hard to see how building 1/35th tanks helps build a 1/350th submarine, or how looking at models, at a show, can suddenly provide insight and inspiration, but it does.

Consider the photo above. It shows how to include a figure with a model airplane, without putting it on a base. This is from a figure contest.

I'm not saying do not have a specialty, just that paying attention to other types of models may supply you with some new insight on your own favorite subject. Nor is this another "build outside your comfort zone" bit. This is about looking at things you normally ignore. Ideas crop up in some of the most unlikely places. After all, the mind, like the parachute only works when it is open, right?

Dave Kimbrell

The Dark Side

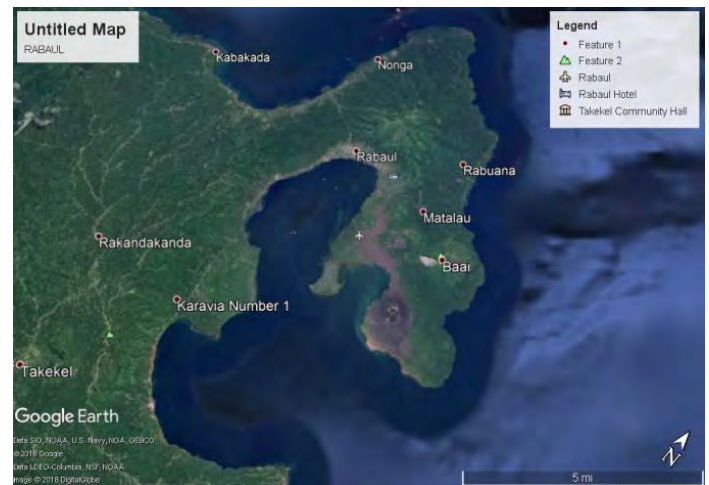
Come to the Dark Side.....Where a chicken can cross the road without her motives being questioned.

WARNING! HISTORY CONTENT!

Rabaul

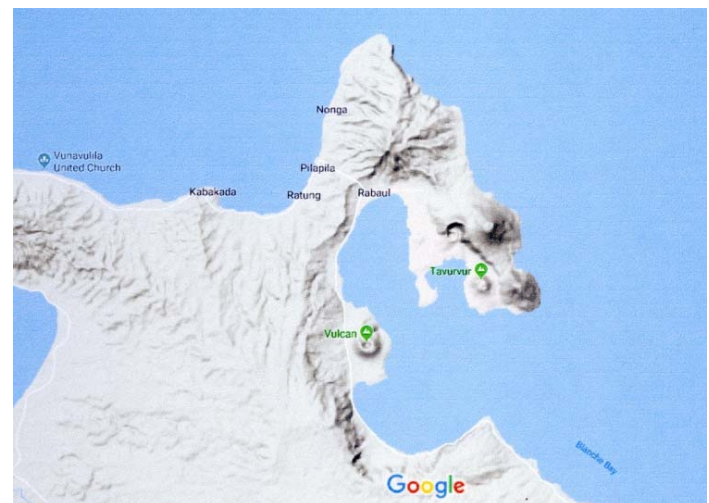
Anyone studying the Solomons campaign has heard the name Rabaul. It was a major staging base for the Japanese and, in fact, the Allied Solomons campaign was begun to retake Rabaul .

Rabaul sets on the eastern end of New Britain Island. It is one of the world's best harbors. Four miles long and two miles wide, it could hold a major fleet and all of the largest capital ships. The water is deep enough to allow large ships to anchor close to shore. It was created by a volcanic explosion around the seventh century AD. It was discovered by Captain Cortland Simpson commanding *HMS Blanche*, in 1872. Yes, he named the harbor for himself and the big bay for his ship.



Rabaul means mangrove in Kuanua (the local language). In 1884, the Germans annexed the area, but lost it to the Australians in 1914. Following WWI, the Australians took over the area and renamed all the locations, except the Bismarck Sea.

The problem with Rabaul was twofold. One, it is not on the trade routes to major locations. Second, it sets right between two active volcanoes; one on either side of the harbor. In 1937, both erupted flattening the town and killing 500 people. In 1994, the volcanoes erupted again pretty much destroying the town. However, due to modern technological warnings, only five people were killed.





In December, 1941, Rabaul became very important to the Japanese because it was about 800 miles to Truk Lagoon, their major naval base. Bombers station there could easily strike at their forward base. Also, it is a perfect staging location for expansion into the Solomons. So in January, 1942, they sent bombers on New Year's Day and within a week, an aircraft carrier. The small Australian force at Rabaul was brushed aside and soon Zeros were landing at the airfield. Rabaul became a major base for the Japanese and was situated perfectly for their planned southern expansion.

The Japanese began fortifying the island and building additional airfields with revetments for both fighters and bombers. From the very start the Allies saw Rabaul as a major threat and in August 1942, they launched the invasion of Guadalcanal directed at retaking Rabaul. The Japanese were determined to defend the island, even sending about one third of its long range, land based radar to Rabaul. Ironically, it actually helped the Allied bombers because the defending fighters did not carry radios and once in the air, could not be redirected when the attackers changed course.

Also deployed were 100 medium and light tanks. While not as good as the Sherman, they certainly have been a problem. Most were hidden away in caves along with some barges and small vessels.



AUSTRALIAN WAR MEMORIAL

096846



AUSTRALIAN WAR MEMORIAL

096838

However, by the end of April 1943, MacArthur approved the Elkton III plan to bypass Rabaul as part of the island hopping campaign. From this point, the plan was to isolate and neutralize the Japanese base mostly by air attacks. By the end of February, 1944, the Japanese abandoned the air

defense of Rabaul, although a few fighters remained; one claim is they built a Type 21 Zero out of parts. It was during this siege that Pappy Boyington was shot down and captured. Virtually every type of aircraft used in the Pacific saw service here.

Although the Allies did land on New Britain and secure the western end of the island, they made no attempt to go any farther. By July 1st, 1944, Rabaul was totally cut off. Not just the port, but also New Ireland and some smaller island to the east. At this point, Rabaul became the world's largest self-sustaining POW camp. There were 100,000 plus troops on the island, with another 40,000 on the surrounding islands. All in all, this was about five times the number troops estimated to be there. Once cut off from and regular supply, they resorted to growing their own food. To counter this, Americans used TBF Avengers to spray diesel fuel to kill the crops.

Many of the most famous photographs of the Pacific war come from the siege of Rabaul.



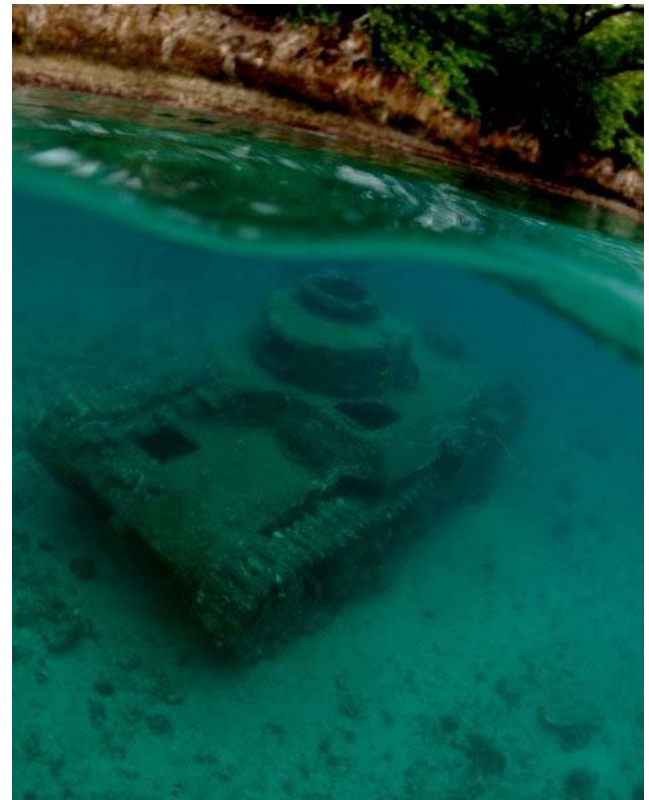


The Allies...mostly American and Australian... continued to attack Rabaul until the end of the war. It became a live training area to give new units a taste of real combat. This was not all one sided as many air crews were lost, right up to the last days of the war. And not all attacks were limited to aircraft. The navies continually launched bombardment attacks against the harbor; sort of a reverse Tokyo Express.

Although cut off, the garrison never ran out of ammunition or food. They did have to go on reduced rations, but easily avoided starvation. The repatriation began in May of 1946 and was not completed until that October.

Today, the area is largely uninhabited due to the volcano. The left over bits of the war still remain.





To Preserve the Past for the Future
 Est. 1967—The tenth oldest chapter in the United States
 Region 6 Newsletter of the Year 2011, 2012 and 2014

General Knowledge and Private Information

Patrick Macnee, aka John Steed 2/6/1922-6/25/2015



His mother was a lesbian and he was a practicing nudist. He was expelled from Eton for selling pornography and being a book maker. He will be best remembered for his long running role as Agent John Steed in *The Avengers* TV series. Most of us old guys became familiar with him in the 1960s because he was the guy that worked with Emma Peel, aka Diana Rigg. His career ran from 1938-2005.

During WWII, he served as a navigator on a **Motor Torpedo Boat**, in the English Channel and North Sea. Shortly before D-Day he was hospitalized for bronchitis. While he was recuperating, his boat and crew were lost in action. In the series, he was proud of not carrying a gun because of his war experiences. However, there were at least seven episodes where he did use a gun.

In the show, he drove a Bentley. In fact, five different Bentleys from seasons. 4-6--a 1924, 1925, 1928, 1929, and 1930. RX6180 is the 6.5 Litre 1930 model. Steed certainly had style!



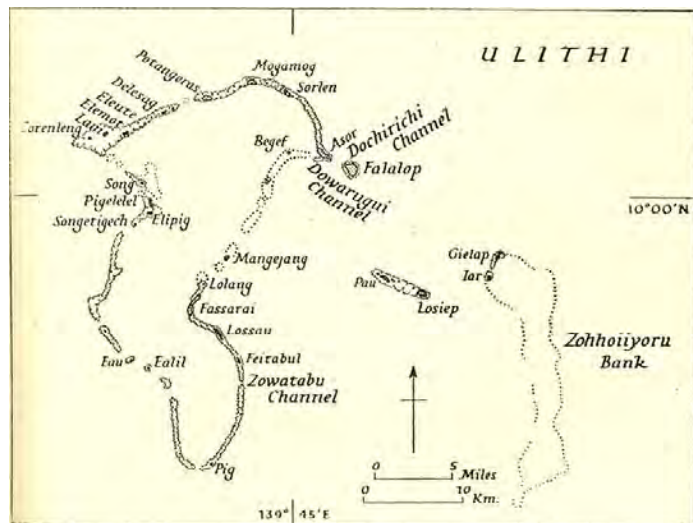
Dave Kimbrell



BATHTUB ADMIRALS

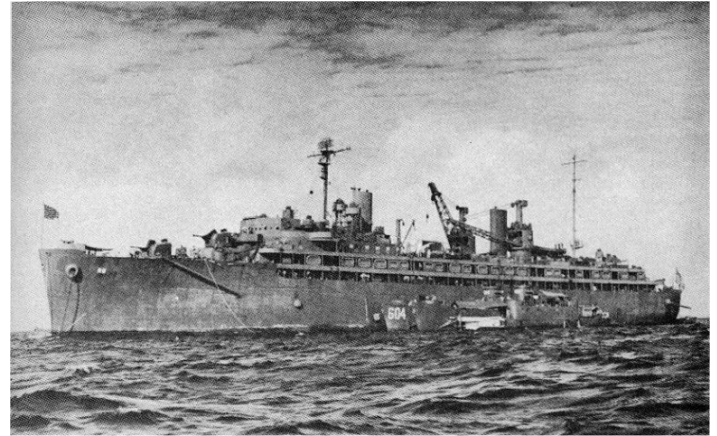
Ulithi

Several years ago when I started this series on naval bases, it was reading about Ulithi that started it all. Unlike the bases I've covered before, Ulithi was a temporary thing. It

[illegible]

For all this fame, Ulithi wasn't even occupied until September 1944—less than a year before the end. In a month it was turned into a bustling base capable of refueling, repairing and provisioning hundreds of ships. R&R facilities were added to the larger islands for the sailors during layovers. All of this was possible because

At its height, Ulithi held over 700 ships. Many were warships but just as many were support vessels of all types.



Repair ship USS Ajax

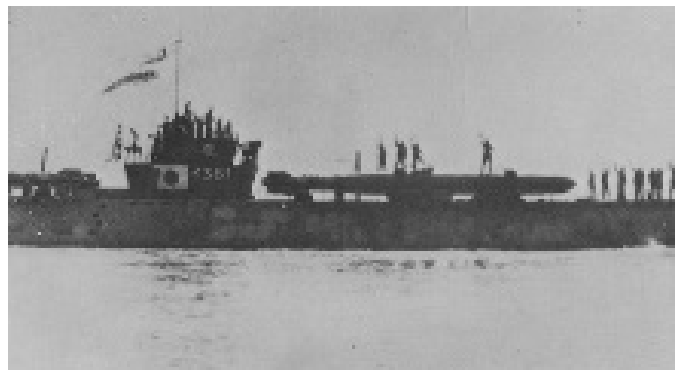


USS *Abatan*, a water distillation ship.



Iowa in floating drydock at Ulithi

The significance of Ulithi wasn't lost on the Japanese. They mounted at least two surface attacks on the anchorage. One was in November 1944 where kaiten suicide subs were transported to the area by carrier subs. This attack saw some success when the oiler USS *Mississinewa* was sunk.



A second kaiten attack in January was foiled when the transport sub I-48 was sunk before the kaitens were launched.

Japan also launched several long-range P1Y1 'Francis' aircraft to make kamikaze attacks in March. One of them successfully struck USS *Randolph* on the aft flight deck, killing 27 sailors.



Randolph with *Ajax* alongside after the kamikaze attack. Note the hole in the deck.





What is perhaps the greatest testament to the US war capacity was how briefly Ulithi existed. It went from nothing but sleepy atolls in September to a bustling anchorage inside of a month. Soon after the March attack, Ulithi was all but abandoned as the primary staging areas moved even closer to Japan in places like Leyte and other recently taken islands. Conquests made possible, in part, by the existence of Ulithi.

Seven months.

Rick Jackson

Our Sponsors

We have several local hobby shops that really deserve recognition and our support. Send some business their way.





FLAGSHIP MODELS

Warship Kits
Ordinance Kits
Detail Sets

— of the —

AMERICAN CIVIL WAR

www.flagshipmodels.com



Challenger N-SCALE
HOBBIES
"TULSA'S N SCALE SOURCE"
We're open 24 hours, just not in a row!

Richard Fisher

T-W 5-8, Th-F 12-8, S 10-5
8753 S. Lewis, Ste. B
Tulsa, OK 74137
(918) 298-4800

Mail Order, Repairs
Custom Painting & Models
Buy, Sell & Trade

Challenger@Challenger-N-Scale.com
Web Site: [HTTP://Challenger-N-Scale.com](http://Challenger-N-Scale.com)



MILDRED & EDGAR SEAY, SR
Founders

108 SO. LEE STREET
IRVING TEXAS 75060

MODEL AIRCRAFT LABS
Since 1945
M. A. L. HOBBY SHOP
Since 1948

OPEN MON. 1:00 TO 6:00
TUES.-WED. 12:00 TO 6:00
THUR.-FRI. 10:30 TO 7:00
SAT. 9:30 TO 6:00

EDGAR SEAY JR
972-438-9233

TOP SHELF MODELS

119 South Main Street
Owasso, OK 74055-3117

918-274-0433 fax 918-376-2824
1-866-210-0687

Royal K. Stuart Manager

e-mail topshelfmodels@peoplepc.com

To Preserve the Past for the Future

Est. 1967—The tenth oldest chapter in the United States
Region 6 Newsletter of the Year 2011, 2012 and 2014

CRM HOBBIES
OUT OF PRODUCTION MODELS-FULL AFTER MARKET

5101 EICHELBERGER ST
ST LOUIS, MO 63109
314-832-4840

CHRIS MERSEAL
OWNER

CRM@INLINK.COM

CRMHOBBIES.COM

REDFROG
hobbies.com

PO Box 394, Marshfield, MO 65706

John Nottestad
sales@redfroghobbies.com

Including:

- Gunze/Mr. Hobby
- Vallejo
- Tamiya
- Lifecolor

Kits & Paints
www.redfroghobbies.com

GrassTechUSA
Made in U.S.A.

Alex Yakubovich
Master Flocker

17011 Lincoln Ave 424 Parker, CO 80134

303-949-7605

Alex@grasstechusa.com
grasstechusa.com



**IMPORTED
FROM COLORADO**

Flock this



Flock this



or Flock this



GrassTech USA provides you the tools, you provide the imagination.
Flock on my friends...

SPACEMONKEY MODELS

James Duffy
owner

116 rosebud Ln.
georgetown, tx 78633
(512) 423-1855

james@rocket.aero

www.rocket.aero
www.spacemonkeymodels.com

rocket.aero

Bobe's Hobby House
"Relax with a Hobby"

ART SUPPLIES FOR STUDENTS & PROFESSIONALS
FINE PAPERS ~ MAT BOARD ~ CRAFT SUPPLIES
BEADS ~ CANING ~ CANDLE MAKING
MODEL KITS & ACCESSORIES ~ FIGURES
DOLL HOUSES ~ MODEL RAILROAD ~ RADIO CONTROL
MILITARY BOOKS ~ GAMES ~ PUZZLES ~ KITES

(850) 433-2187
www.bobeshobbyhouse.com

5719 North "W" Street
Pensacola, FL 32505

IPMS/USA MEMBERSHIP FORM

IPMS No.: _____ Name: _____

Address: _____ If Renewing _____ First _____ Middle _____ Last _____

City: _____ State: _____ Zip: _____

Phone: _____ E-mail: _____

Signature (required by PO) _____

Type of Membership ☐ Adult, 1 Year: \$30 ☐ Adult, 2 Years: \$58 ☐ Adult, 3 Years: \$86

☐ Junior (Under 18 Years) \$17 ☐ Family, 1 Year: \$35 (Adult + \$5. One Set Journals) How Many Cards? _____

☐ Canada & Mexico: \$35 ☐ Other / Foreign: \$38 (Surface) Checks must be drawn on a US bank or international money order

Payment Method: ☐ Check ☐ Money Order

Chapter Affiliation, (if any): _____

If Recommended by an IPMS Member, Please List His / Her Name and Member Number: _____

Name: _____ IPMS No.: _____

IPMS/USA

PO Box 56023

Join or Renew Online at: www.ipmsusa.org

St. Petersburg, FL 33732-6023

To Preserve the Past for the Future

Est. 1967—The tenth oldest chapter in the United States
Region 6 Newsletter of the Year 2011, 2012 and 2014

OHMS EVENT CALENDAR

2018

October

- 5 OHMS Meeting. MOM contest.
- 6 Austin Scale Modelers Society hosts the ASMS Capitol Classic at the Travis County Expo Center, 7311 Decker Lane, Austin, TX. Ian Latham - graphicsdog@gmail.com
- 19 OHMS Meeting. – Program night. Build Night.
- 20 Chisholm Trail 2018, Midway Baptist Church, 5135 S Broadway, Wichita KS. IPMS Chisholm Trail Scale Modellers, Jeff Cadenhead 316-522-5328 chevymontecarlo18@yahoo.com
- 27 Cajun Modelfest 32 at LSU MiniFarm 4-H Building 101 Efferson Hall, CR4F+HX, Baton Rouge Scale Modelers

November

- 2 OHMS Meeting. MOM contest
- 16 OHMS Meeting. Annual Club Auction

December

- 1 OHMS Meeting. MOM contest. Budget Build contest.
- 15 OHMS Meeting. Christmas Party

2019

January

- 4 OHMS Meeting. MOM contest.
- 18 OHMS Meeting. Program Night. Build Night
- 27 CALMEX 33, IPMS/SWAMP, Lake Charles Civic Center, 900 Lakeshore Drive, Lake Charles, LA [Robert Leishman](mailto:Robert.Leishman@calmex33.com) 337-589-4614

February

- 1 OHMS Meeting. MOM contest
- 15 OHMS Meeting. Program Night.
- 17 ModelFiesta 38, IPMS Alamo Squadron, San Antonio. San Antonio Event Center 8111 Meadow Leaf Drive, Len Pilhofer - MFDirector@alamosquadron.com

March

- 1 OHMS Meeting. MOM contest. Budget Build contest.
- 15 OHMS Meeting. Program Night.
- 30 RiverCon VIII, Bossier Civic Center, 620 Benton Rd, Bossier City, LA,, IPMS/Red River Modelers, contact [Andy Bloom](mailto:Andy.Bloom@rivercon.com) 318-294-2414
- 30 IPMS Tulsa Modelers Forum model contest, Bixby Community Center, 211 N. Cabaniss, contact [Greg Kittinger](mailto:Greg.Kittinger@ipms-tulsa.com) 918-260-8349

April

- 5 OHMS Meeting. MOM contest.
- 7 Great South Tigerfest XXIV Scale Model Contest, New Orleans Flying Tigers Scale Model Builders, St. Jerome Knights of Columbus Hall, 3310 Florida Ave., Kenner, LA, 70064 contact Richard Marriott rmpaintingmusic14@gmail.com

To Preserve the Past for the Future

*Est. 1967—The tenth oldest chapter in the United States
Region 6 Newsletter of the Year 2011, 2012 and 2014*