



# O.H.M.S.

## *Oklahoma Historical Modelers' Society*

### NEWSLETTER



Volume 49, Issue 3

March 2019

#### Coming Events

March 1-- OHMS Meeting. MOM contest. Budget Build contest. (back on the regular schedule)  
March 15-- OHMS Meeting. Program Night.  
March 30-- RiverCon VIII, Bossier Civic Center, 620 Benton Rd, Bossier City, LA., IPMS/Red River Modelers, contact [Andy Bloom](#) 318-294-2414  
March 30-- IPMS Tulsa Modelers Forum model contest, Bixby Community Center, 211 N. Cabaniss, contact [Greg Kittinger](#) 918-260-8349  
April 5--OHMS Meeting. MOM contest.  
April 6--Great South Tigerfest XXV Scale Model Contest, New Orleans Flying Tigers Scale Model Builders, St. Jerome Knights of Columbus Hall, 3310 Florida Ave., Kenner, LA, 70064 contact Richard Marriott [rmpaintingmusic14@gmail.com](mailto:rmpaintingmusic14@gmail.com)  
April 19--OHMS Meeting. Program night. Build Night  
April 27--IPMS Houston Modelmania 2019--Stafford Center, 10505 Cash Road, Stafford, TX 77477. Contact [Tom Moon](#) 832-512-0107

#### Meeting Reports

##### **Business Meeting—February 1**

We got the criteria for the next Budget Build from Patrick as the previous winner. For the next Budget Build, build whatever you want, as long as it is out of your comfort zone! Everybody has one of those kits he or she once bought but never got to building because it's not something within the normal model builder's realm. Other than that, the kit should be within a \$20 budget constraint.

The March program is unset at the moment. Anyone with a suggestion, or better yet, a program they are willing to put on, should contact Steven.

#### **Model of the Month— February 1**



*Tiger II*

*Mark Walcott*



*Bergpanther Ausf. A*

*Dave Kimbrell*



*Arado 234*

*Butch Maurey*



*XP-47H*

*Kevin Sampson*



*F-15*

*Ethan Willis*



*Warhammer Dreadnought*

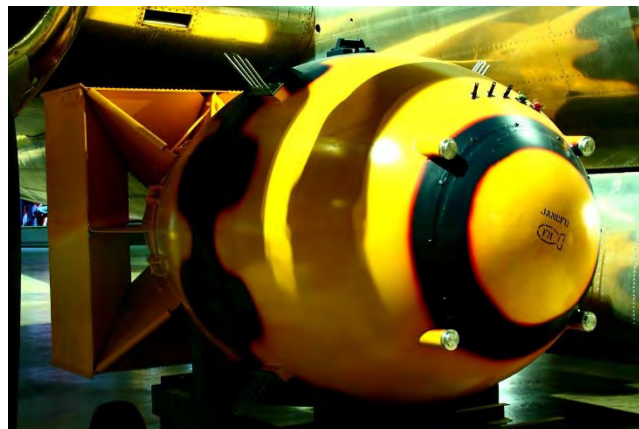
*Ethan Schwing*





*Asteroid Oumuamua*

*Rick Jackson*



**A few thoughts from the Head Chicken...**

### **Rivet Counters**



Some people have called IPMS nothing but a bunch of rivet counters. Like many such myths, there is a pollen size kernel of truth to this. If you enter a contest with a popular kit of a popular subject...say the Tamiya 1/48th P-51...you will be in a room with perhaps one hundred or more people familiar with both the kit and the subject. Additionally, there will be more entries of that kit than just your model. So, yes, they will be critical, without question.

When it comes to the contest, the judges have neither the time nor the inclination to count rivets or similar activities. However, your popular subject *IS* going to be compared to others of the same type. If you ignored some detail as unimportant and another contestant fixed, replaced or detailed, your very nice model will be compared to that superbly nice model.

A large contest like a National is likely to have an average of fifteen entries per category. Remember, that is an average. Not all have that many and some have way more. Out of that mess, the judges pick three winners per category,

### **Program Night—February 15**



Kevin Sampson presented pictures from a visit to the National Museum of Nuclear Science & History in Albuquerque. Previously known as the National Atomic Museum, it houses numerous artifacts dealing with atomic weapons and delivery systems.

*To Preserve the Past for the Future*

*Est. 1967—The tenth oldest chapter in the United States  
Region 6 Newsletter of the Year 2011, 2012 and 2014*

so they have to look at a lot of models in a short period of time. Kicking out an entry simply because of not enough rivets or because the model is a scale two inches short, or anything else so trivial, does not happen.

Dave Kimbrell

## The Dark Side

**Come to the Dark Side.....**We run on sarcasm and inappropriate thoughts.

### More Models

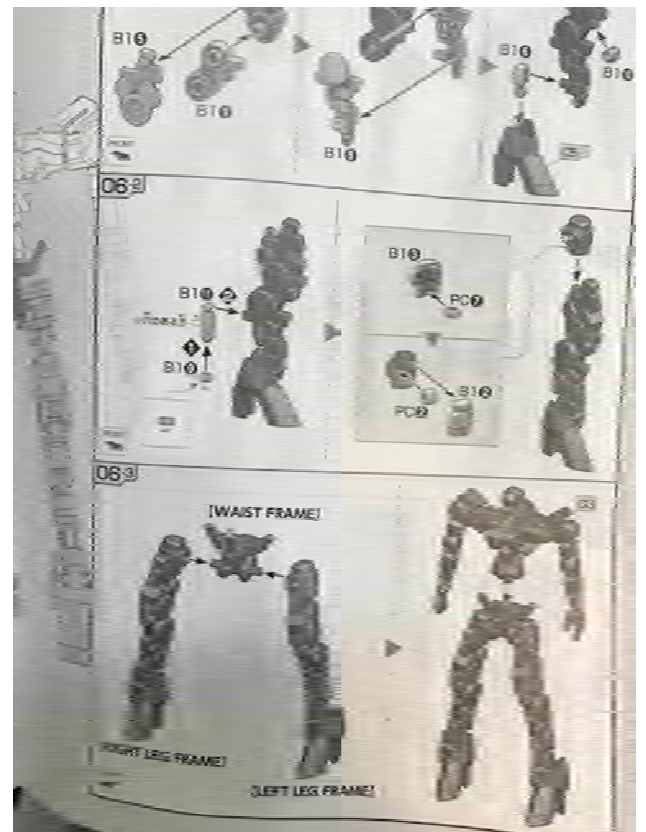
**Tiger Model** has released an interesting kit of the **CB-90 Fast Assault Craft** in 1/35th scale. My kit comes with Malaysian and Greek markings. There is a second issue with American markings. The model has a full interior. The boat was developed in Sweden and is shown to be in service with seven countries, including the United States. Mexico is the largest operator with 48 craft. Cost around \$95.



**Bandai** has released what seems like hundreds of the **GUNDAM** line of combat robot fighting suits. This one is in the 1/100th line. I think it is a bad guy, but they don't tell you in the kit. It comes on nine trees of various colors and is basically snap-tite. However, the quality of the fit is very

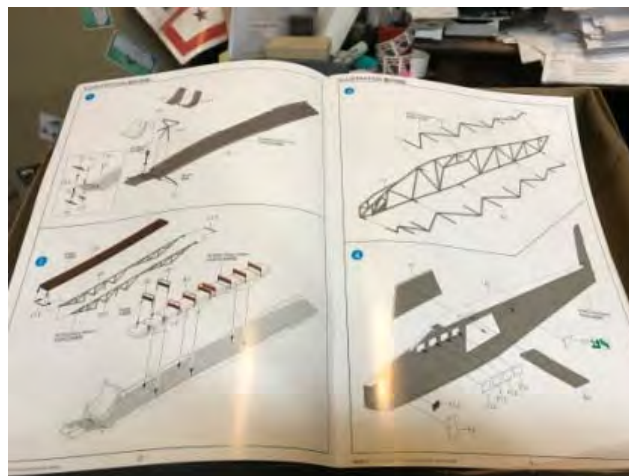


good. Many do not bother to paint the models. Those who do usually create a very impressive finished model. This one can be built without any weapons, if you choose. Price is around \$30.





**Bronco** finally released this model of the DFS 230B-1 Assault Glider, in 1/35th. This is the glider used at Eben-Emael, Crete, and the Grand Sasso raid to rescue Mussolini. It comes with a set of DML Fallschirmjagers and markings for four gliders, one of which is Rumanian. Cost around \$57.



**Williams Brothers** released this 1/32nd scale kit of Keith **Ryder's Schoenfeldt Firecracker** many years ago and it shows up periodically in a new box. These guys specialized in post- WWI, pre-WW2 American aircraft and while they have introduced anything new in some years, they are the only ones producing kits of these subjects. None of the kits

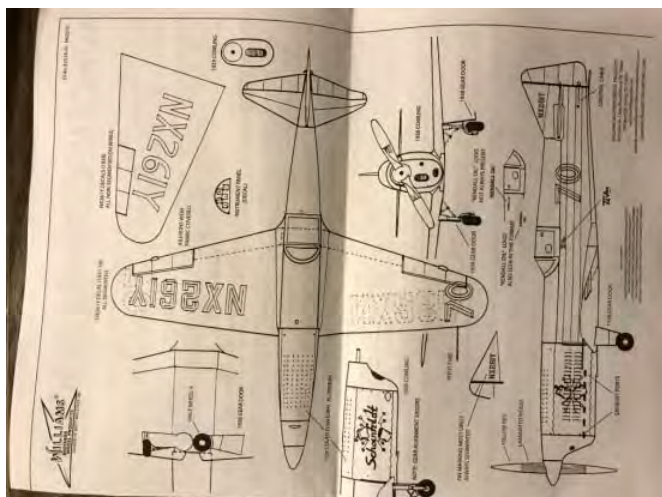
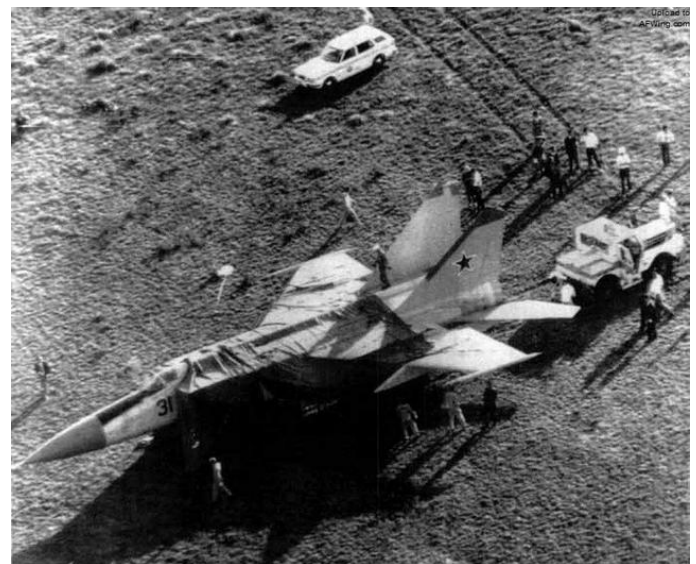
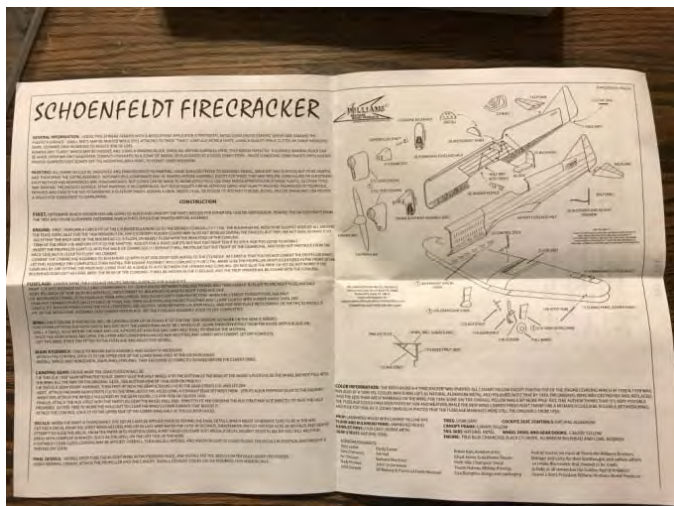


can quite be built OOB because they offer minor variations which usually means you need to cut or drill something. It is actually made in the United States. Price is around \$28.



## General Knowledge and Private Information

Working on the ICM Mig-25 had me looking at pictures of the airplane. Here is a shot of Lt. Belenko's bird which he landed in Japan and the Hasegawa kit released about a year or so later.



Dave Kimbrell





## BATHTUB ADMIRALS

### Pearl Harbor

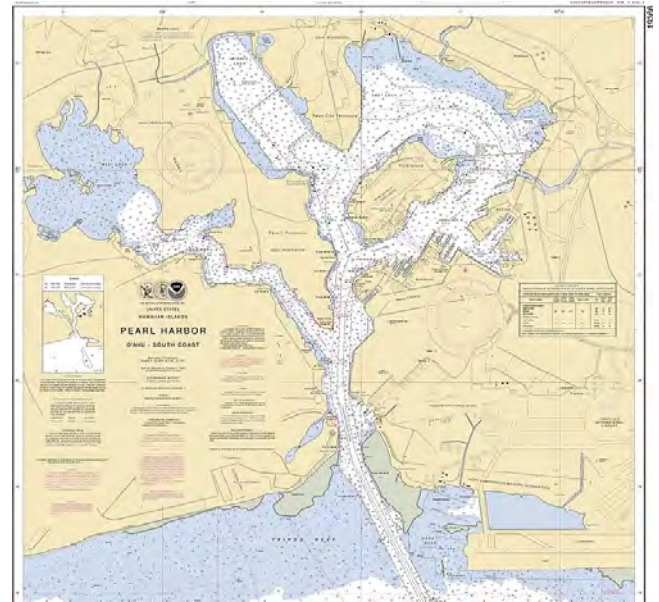


Pearl Harbor is arguably the most famous naval base in history. The attack on December 7, 1941 has made it so. In fact, trying to do any real research on-line about the base itself is nearly impossible because almost all of the links are some variations of 'XX (fill in a number here) Facts About the Attack on Pearl Harbor'

The first confirmed European contact with the islands was by Captain Cook in 1778. While it became a stopover port, the harbor remained an unimproved anchorage for years. The United States gained exclusive anchorage rights before the Spanish-American war and that conflict, with the acquisition of the Philippines, emphasized the need for a base in the area. The islands were annexed in 1898 and the process of improving the harbor began.

Pearl Harbor's use as a major base was a long time in coming. Even though a drydock was constructed there in 1910, the difficulty in supplying the base and the distance made keeping a presence there unpopular. It was also shallow. It wasn't until the 1930's that the harbor was

improved and deepened to the point that the largest battleships and aircraft carriers could enter. In 1940, additional dredging allowed ships to complete a circuit around the island. The improvements were part of the reason it became practical to actually locate the Pacific Fleet at Pearl instead of on the West Coast.



Pearl Harbor covers about 10,000 acres (15.6 square miles) with about 10 square miles navigable (the white areas). Like many harbors, the anchorage is surrounded by land. This makes it less susceptible to weather and access to ships at anchor can be controlled. It also makes it easier for an enemy to close off the base if the access point can be blocked. The Japanese tried very hard to do so when *Nevada* attempted to sortie during the attack.

### Ford Island

The most distinctive feature of Pearl Harbor is Ford Island. Initially about 330 acres, dredged material from the harbor enlarged it until it covers about 400 acres. Not long after the drydock was built, an air station was located on the island servicing both Army and Navy aircraft. The Army stayed there until Hickam Field was completed in 1939.





This is the earliest known aerial photo of Ford Island. You are looking down on what would become the northern end of Battleship Row. *Arizona* will sink about mid-way up the photo.

There isn't much reason to recap the war years.

After the war, Pearl continued to be a major facility and over time has evolved as various pressures have forced change. The attack and subsequent designation of *Arizona* as a war memorial draws many tourists to the base. Large super carriers need more space and since Battleship Row was essentially retired as a moorage, other locations had to be built.



Above the caption for the Arizona Memorial is a dock and pier angling into the harbor large enough to berth aircraft carriers and assault carriers. To the right of the photo near the 'Pearl Harbor Naval Base' caption is the main drydock that contained *Pennsylvania*, *Cassin* and *Downes* during the attack.



Another angle showing the new berths. *Midway* (on the side nearest the camera) and *Independence* are docked at the pier with Battleship Row in the background. This is before the *Missouri* memorial was constructed.





While the memorial for USS *Arizona* has been in place for years, a new facility and the decommissioned USS *Missouri* was added in 1999—thus the start and end of the war bookend Battleship Row. Also significant, Missouri is berthed almost precisely in the same spot as USS *Oklahoma* was on December 7.



Maneuvering through the harbor is now even harder. In 1996, the Admiral Clarey Bridge was constructed to connect Ford Island to the rest of the island. It has a retractable section that opens up a 650 foot gap for ships to pass. This process takes about 25 minutes.



## USS *Utah*



Many don't realize USS *Utah* is still at Pearl as well. *Utah* was demilitarized and functioning as a bombing target ship at the start of the war. She was berthed at Ford Island on the opposite side from Battleship Row. This was an area commonly occupied by carriers. It is believed that this contributed to her being attacked. A small memorial was eventually built to honor

The large carrier mooring is still in use and can be seen in the "Pearl Harbor Today" photo. If you look very carefully, you can see the small, white pier for the memorial between it and the smaller piers mid-island.

Photo # 80-G-484354 Memorial plaque on wreck of USS *Utah*, at Pearl Harbor, 9 December 1950



An early memorial plaque for *Utah*. Note some of the timbers used to protect the deck from the practice bombs are still present.

Rick Jackson



## Our Sponsors

We have several local hobby shops that really deserve recognition and our support. Send some business their way.







MILDRED & EDGAR SEAY, SR  
Founders

108 SO. LEE STREET  
IRVING TEXAS 75060

MODEL AIRCRAFT LABS  
Since 1945  
**M. A. L. HOBBY SHOP**  
Since 1948

OPEN MON. 1:00 TO 6:00  
TUES.-WED. 12:00 TO 6:00  
THUR.-FRI. 10:30 TO 7:00  
SAT. 9:30 TO 6:00

**EDGAR SEAY JR**  
**972-438-9233**



MIKE  
DAVIDSON  
**THE HUSSAR**  
EST. 1981  
MILITARY MINIATURES, TOY SOLDIERS, BOOKS & PRINTS  
6029 SOUTH SHERIDAN ROAD / TULSA, OKLAHOMA 74145  
(918) 492-3559

*Challenger* N-SCALE  
HOBBIES  
"TULSA'S N SCALE SOURCE"  
We're open 24 hours, just not in a row!

Richard Fisher

T-W 5-8, Th-F 12-8, S 10-5  
8753 S. Lewis, Ste. B  
Tulsa, OK 74137  
(918) 298-4800

Mail Order, Repairs  
Custom Painting & Models  
Buy, Sell & Trade  
Challenger@Challenger-N-Scale.com  
Web Site: HTTP://Challenger-N-Scale.com

**TOP SHELF MODELS**

119 South Main Street  
Owasso, OK 74055-3117

918-274-0433 fax 918-376-2824

1-866-210-0687

**Royal K. Stuart Manager**

e-mail [topshelfmodels@peoplepc.com](mailto:topshelfmodels@peoplepc.com)

**CRM HOBBIES**  
OUT OF PRODUCTION MODELS-FULL AFTER MARKET

5101 EICHELBERGER ST  
ST LOUIS, MO 63109  
314-832-4840

**CHRIS MERSEAL**  
OWNER

CRM@INLINK.COM

CRMHOBBIES.COM

GrassTechUSA  
Made in U.S.A.

Alex Yakubovich  
Master Flocker

17011 Lincoln Ave 424 Parker, CO 80134

303-949-7605

Alex@grasstechusa.com  
grasstechusa.com

**IMPORTED  
FROM COLORADO**

Flock this Flock this or Flock this

GrassTech USA provides you the tools, you provide the imagination.  
Flock on my friends...

**Bobe's Hobby House**  
"Relax with a Hobby"

ART SUPPLIES FOR STUDENTS & PROFESSIONALS  
FINE PAPERS ~ MAT BOARD ~ CRAFT SUPPLIES  
BEADS ~ CANING ~ CANDLE MAKING  
MODEL KITS & ACCESSORIES ~ FIGURES  
DOLL HOUSES ~ MODEL RAILROAD ~ RADIO CONTROL  
MILITARY BOOKS ~ GAMES ~ PUZZLES ~ KITES

(850) 433-2187  
[www.bobeshobbyhouse.com](http://www.bobeshobbyhouse.com)

5719 North "W" Street  
Pensacola, FL 32505





PO Box 394, Marshfield, MO 65706

**John Nottestad**  
sales@redfroghobbies.com

**Kits & Paints**  
**www.redfroghobbies.com**

**Including:**

- Gunze/Mr. Hobby
- Vallejo
- Tamiya
- Lifecolor

# SPACEMONKEY MODELS

**James Duffy**  
owner

116 rosebud Ln.  
georgetown, tx 78633  
(512) 423-1855

james@rocket.aero

www.rocket.aero  
www.spacemonkeymodels.com

**rocket.aero**



2145 N.E. 36<sup>th</sup> Street  
Oklahoma City, Oklahoma  
**FREE ADMISSION**  
Tuesday-Friday 9am-4:15pm  
Saturday 10am-4:15pm  
Sunday 1pm-4:15pm  
Closed Monday



## US ARMY ARTILLERY MUSEUM

Tuesday -Saturday 9am to 5pm  
Closed Sunday and Monday  
call

580-442-1819

or go to

<http://sill-www.army.mil/famuseum/>  
for more information

*To Preserve the Past for the Future*

Est. 1967—The tenth oldest chapter in the United States  
Region 6 Newsletter of the Year 2011, 2012 and 2014

# IPMS/USA MEMBERSHIP FORM

IPMS No.: \_\_\_\_\_ Name: \_\_\_\_\_

Address: \_\_\_\_\_ If Renewing \_\_\_\_\_ First \_\_\_\_\_ Middle \_\_\_\_\_ Last \_\_\_\_\_

City: \_\_\_\_\_ State: \_\_\_\_\_ Zip: \_\_\_\_\_

Phone: \_\_\_\_\_ E-mail: \_\_\_\_\_

Signature (required by PO) \_\_\_\_\_

Type of Membership ☐ Adult, 1 Year: \$30 ☐ Adult, 2 Years: \$58 ☐ Adult, 3 Years: \$86

☐ Junior (Under 18 Years) \$17 ☐ Family, 1 Year: \$35 (Adult + \$5. One Set Journals) How Many Cards? \_\_\_\_\_

☐ Canada & Mexico: \$35 ☐ Other / Foreign: \$38 (Surface) Checks must be drawn on a US bank or international money order

Payment Method: ☐ Check ☐ Money Order

Chapter Affiliation, (if any): \_\_\_\_\_

If Recommended by an IPMS Member, Please List His / Her Name and Member Number: \_\_\_\_\_

Name: \_\_\_\_\_ IPMS No.: \_\_\_\_\_

**IPMS/USA**

PO Box 56023

Join or Renew Online at: [www.ipmsusa.org](http://www.ipmsusa.org)

St. Petersburg, FL 33732-6023

*To Preserve the Past for the Future*

Est. 1967—The tenth oldest chapter in the United States  
Region 6 Newsletter of the Year 2011, 2012 and 2014



# OHMS EVENT CALENDAR

2019

March

- 1 OHMS Meeting. MOM contest. Budget Build contest.
- 2 IPMS MCMA Showdown 2019, Dr. Pepper Center, 12700 N Stemmons Frwy, Farmers Branch TX, Metroplex Car Modelers Association, [Len Woodruff](#) 972-979-5722
- 15 OHMS Meeting. Program Night.
- 30 RiverCon VIII, Bossier Civic Center, 620 Benton Rd, Bossier City, LA,, IPMS/Red River Modelers, contact [Andy Bloom](#) 318-294-2414
- 30 IPMS Tulsa Modelers Forum model contest, Bixby Community Center, 211 N. Cabaniss, contact [Greg Kittinger](#) 918-260-8349

April

- 5 OHMS Meeting. MOM contest.
- 6 Great South Tigerfest XXV Scale Model Contest, New Orleans Flying Tigers Scale Model Builders, St. Jerome Knights of Columbus Hall, 3310 Florida Ave., Kenner, LA, 70064 contact Richard Marriott [rmpaintingmusic14@gmail.com](mailto:rmpaintingmusic14@gmail.com)
- 19 OHMS Meeting. Program night. Build Night
- 27 IPMS Houston Modelmania 2019--Stafford Center, 10505 Cash Road, Stafford, TX 77477. Contact [Tom Moon](#) 832-512-0107

May

- 3 OHMS Meeting. MOM contest.
- 17 OHMS Meeting. Program Night. Night at the Museum (TENTATIVE)

June

- 31-1 Tulsa Figure Show and contest at the Wyndam Hotel in Tulsa
- 1 **Region 6 Contest** Scalefest—IPMS/NCT— Grapevine Convention Center, 1209 S Main St. [Map](#) IPMS-North Central Texas
- 7 OHMS Meeting. MOM contest. Budget Build contest.
- 8 IPMS Metro OKC will host Soonercon at Council Road Baptist Church, 2900 North Council Road, Bethany, Oklahoma. Contact [Richard R. Fisher](#) 918-724-8929
- 21 OHMS Meeting. Program Night.
- 22 AutumnCon 2019 Clarion Inn Conference Center, 501 Hwy 190, Covington, LA, 70433, , IPMS/NorthShore Scale Modelers, Warren Dickerson (850) 830-0699 [northshore.scale.modelers@gmail.com](mailto:northshore.scale.modelers@gmail.com)

July

- 5 OHMS Meeting. MOM contest.
- 19 OHMS Meeting.—Program night. Build Night.
- 20 HAMS 13th Annual Model Car Show and Contest. Cypress Creek Christian Community Center Annex Building Gym, 6823 Cypresswood Drive, Spring TX. IPMS Houston Automotive Modelers Society (HAMS)

August

- 3 OHMS Meeting. MOM contest.
- 7-10 **2019 IPMS/USA National Convention & Contest** at the Chattanooga Trade and Convention Center, Chattanooga TN
- 17 OHMS Meeting. Program night.

*To Preserve the Past for the Future*  
Est. 1967—The tenth oldest chapter in the United States  
**Region 6 Newsletter of the Year 2011, 2012 and 2014**