



Just Glue It

Official Newsletter of Model Creations Unlimited, IPMS

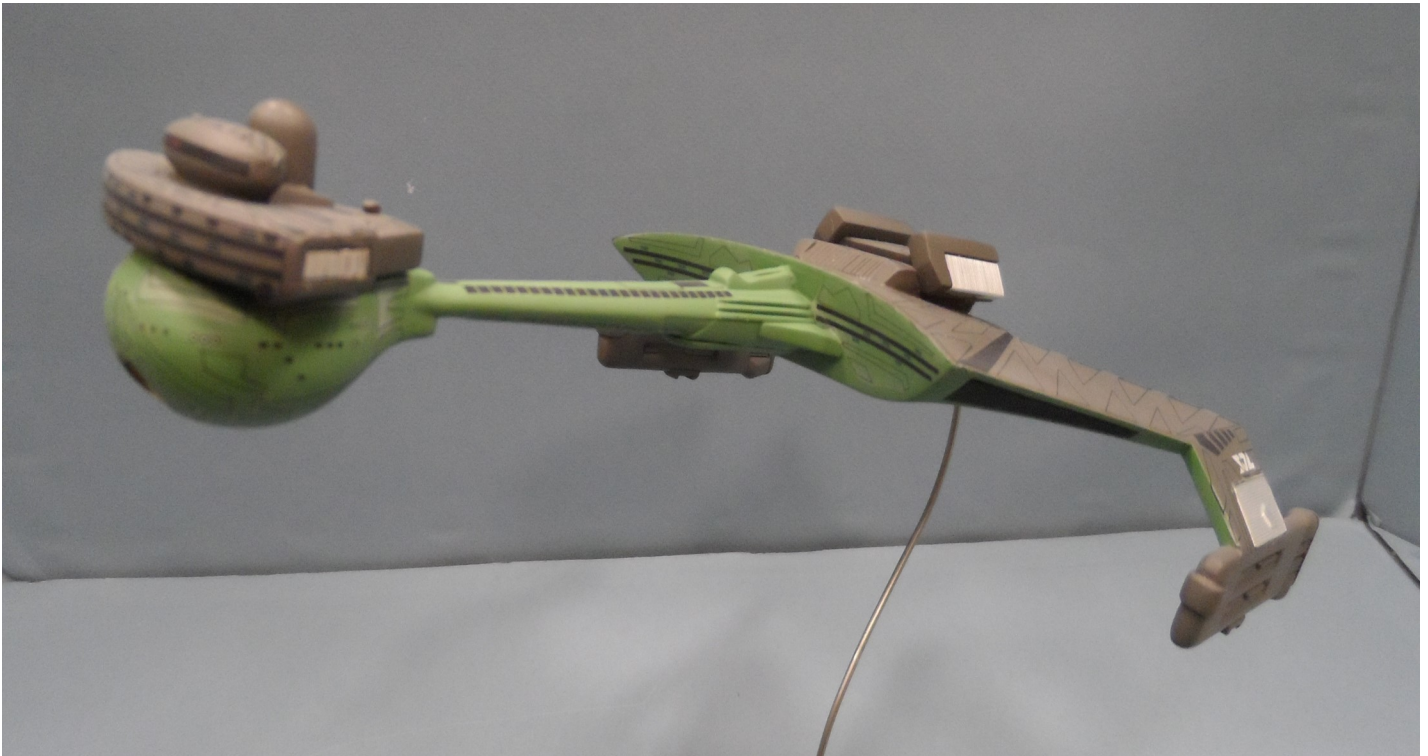


Volume 8

October 2018

Issue 10

Featured Model



This is the Klingon D-7 kit from Polar Lights. It is 1/1000 scale. I built it as a practice piece in anticipation of the upcoming 1/350 scale kit due from Polar lights in Oct/Nov. The kit is a snap-kit, but I used glue to make the assembly stronger. The kit pieces fit fairly well, but the resulting seams required much putty and sanding. I used a two-tone color scheme that was used on the original filming model used in the 60's TV show. However, the original used a purple/blue and light green combination. I thought the two-tone green looked better, so I went with that instead. The hull panels and markings are decals I designed to give it a more interesting look. The Star Trek rivet counters will tell you that this kit is inaccurate and requires numerous "fixes"

to make it look like the filming model. I say to them, "Make it look like you want, and fire full phasers." This hobby is suppose to give you pleasure, not something to please the haters. I enjoyed making this ship from one of my favorite entertainment franchises, and making it look the way I thought it should. Duane

Club Contacts

President: Bob Collado
V.P. & Newsletter: Duane Hayes
Treasurer: Dave Henk
Secretary: Bob Tano
IPMS Contact: Bob Collado

Email: [Bob Collado](#)
Email: [Duane Hayes](#)
Email: [Dave Henk](#)
Email: [Bob Tano](#)
Email: [Bob Collado](#)

Click on the person's
name to send an Email

Model Creations Unlimited

Meets every first and third Wednesday - 6:00 to 8:30 PM

Model Creations Unlimited, IPMS (MCU) is a non-profit organization dedicated to having fun and serving the modeling community in Jacksonville, FL. MCU is a chartered chapter of the International Plastic Modelers Society (IPMS) and as an affiliate we enjoy an association with modelers throughout the country and the world. We are dedicated to exposing the modeling hobby to potential new members so that they can develop an interest in the hobby. The club is open to anyone with an interest in modeling, regardless of age, gender, subject matter or materials. If you're looking for a family friendly experience; parents and children, adolescents, and couples are encouraged to become part of our family of modelers. If you do decide to join, membership dues are \$25.00 for new members, and then \$20.00 a year thereafter. We also have a family membership at \$25.00. All new memberships include one club T-shirt. We encourage you to visit us on the web or on Facebook, attend a couple of our meetings and check us out. We hope you eventually decide to become a member of our group.



Website

Facebook



Legal Stuff

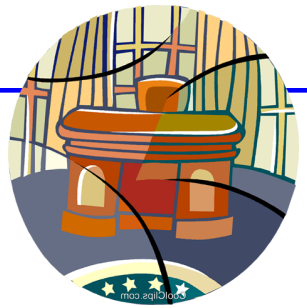
The views and opinions expressed in "Just Glue It" are those of the individual authors, and do not constitute the official position of Model Creations Unlimited or IPMS-USA. No matter your level of writing experience or computer expertise, you are encouraged to submit any subject or article you think might be of interest to your fellow modelers. The editor will gladly work with you and see that your material is properly edited and prepared to be included in the newsletter. Articles can be submitted via e-mail. The newsletter is currently being edited using a PC with Windows and MS Publisher and the other usual suspects loaded. This means I can handle almost anything you want to send, but for the sake of my limited sanity, PLEASE don't make me break out the universal translator to decode your esoteric files. Send your story/article as a text file in eMail or a Word document. Do not, under any circumstances, submit articles with pictures embedded in a Word file. Send your pictures separately as JPGs, PNGs or GIFs (JPG is my preferred format). Failure to comply means I will simply shred the article while drawing cartoon mustaches on all your pictures. Deadline for submission of articles is the 25th of the month - earlier would be appreciated! Please contact the editor if you have any questions.

The use or reprint of the material contained in this newsletter, must give attribution both to the author and the source document. This newsletter is prepared with only one purpose in mind; information for our members, and all fellow modelers. It is prepared and published in order to expand the skills and knowledge of those fellow modelers. If you ever feel that this publication is biased or exceeds good taste or decorum, I want to hear about it. You can discuss it with me at the next meeting or you can contact me by phone at (904) 743-6677 or by E-Mail. [Duane Hayes](#)

Duane Hayes, Newsletter Editor



The Prez's Desk by Bob Collado



Hello and welcome to all our newsletter followers to the October issue. September was a good month for all the members working on projects. Again there was a diversity of subjects presented for the September Theme Build wrap-up. Kudos to all who participated. For those members not able to finish a build in time, there is still one more opportunity ahead with our last Theme Build for the year that wraps up on December 5th. The Theme is the "Cold War", so there are lots of subjects to choose from. We had a special guest at our September 19th meeting, Mike Cassata, who gave us an update on the POW-MIA Memorial complex. He discussed developmental plans and thanked the club for its support to date.

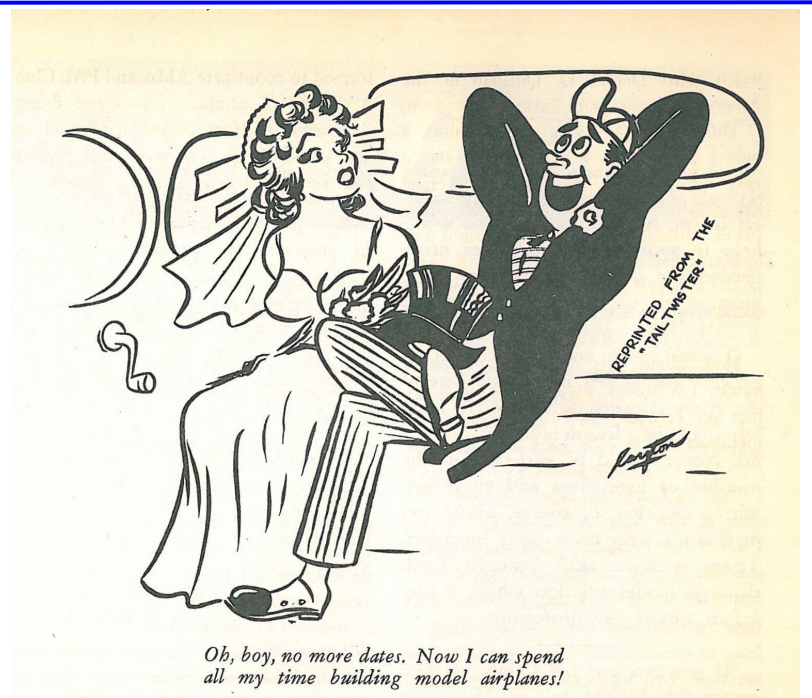
On Saturday, September 22nd MCU set up a booth at the Memorial Museum parking lot along with a large number of Veteran Organizations to celebrate in remembrance of all POW-MIAs from all branches. It was a touching day, with great music, and discussions with numerous veterans, VFW Club representatives, Veteran Association members. Perhaps the two most poignant talks were with two WWII Veterans who told their stories and expressed how proud they were to see so many still remembering the sacrifices of so many who served our country. I had the opportunity to visit the Museum auditorium with Mike Cassata between ceremonies and movie presentations. While doing so I measured the display cases in which donated aircraft and other vehicles and ships will be placed on display. Presently we are working on compiling a complete list of squadrons and aircraft requested in order to have a great presentation of Cecil Field Squadrons and other Service Branch Units, without having duplications. Cecil Field will be a great opportunity for Model Creations to give back, and I for one look forward to a long fulfilling relationship.

Ahead for the club, well again this year due to Election Voting we will only have one meeting in November, check your newsletter and emails for updates. Our bonus month is December as we will not only wrap-up the year's Theme Builds, but when we will celebrate our annual Christmas Party with fun for all.

I wish you all the best of health and a continued thought....."Just Glue It".

Bob Collado, President

**MODEL
HUMOR**



*Oh, boy, no more dates. Now I can spend
all my time building model airplanes!*

Club Theme Builds

The rules are very simple:

- 1) Build any model that fits the theme category.
- 2) As with all theme builds this is not a judged event and models are built for fun.
- 3) Members may show more than one model, but at least one of the models shown as a theme build entry must be a NEW model built specifically for this theme to be eligible for the raffle drawing. A previously built kit from your collection does not qualify.
- 4) Each member presenting a qualifying model will receive one ticket for the two \$10.00 raffle prizes. Only one raffle ticket will be issued per qualifying member.

September Quarterly Theme Build - "Anything That Floats" The pictures from this Theme Build are featured elsewhere in this newsletter. The winners of the 2 \$10.00 prizes were Alan Zawacki and Bill Giles.

December Quarterly Theme Build - "Cold War: 1960-1990" Any subject that was used during the Cold War Years. You can build it any way you want. All members who build a new model will be eligible for the two \$10.00 awards at the December 5, 2018 meeting.

2019 Theme Builds - Be thinking about what you would like next year's Theme Builds to be. We will be voting on the next 4 Theme Builds at the October 3rd meeting. We need to nail down the subjects so Steve can finish his before the year ends.

Painting Wheels by Dave Henk

Do you want a fast way to paint wheels? Here's an easy way to do the job.

Get a Circle Guide Template as seen in the second photo. You can get these from \$5-\$8.

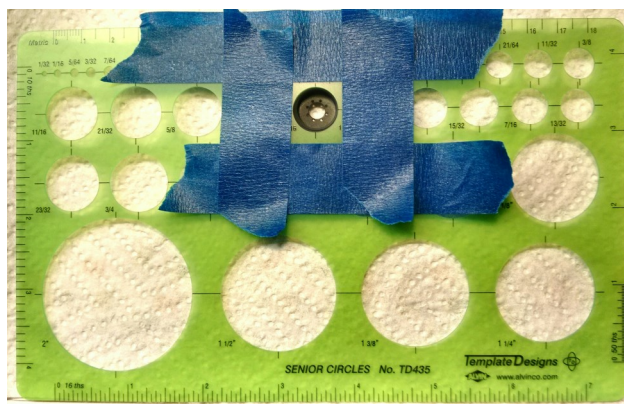
Step #1

Spray your tires black.



Step #2

Pick out the circle that will just cover the tire rubber. Mask off the nearby holes on the circle guide.



Step #3

Spray the wheel color and you're done.



If you have a modeling tip that you would like to share with fellow modelers just e-mail them to the editor with a short description and at least one picture of the product or procedure.

Upcoming Events



October 3, 2018 - Club Meeting - 6:00 - 8:30 PM - University Park Library. **Because of Early Voting this will be the only meeting in October.**

November 10, 2018 - First Coast Model Kit Auction - Orange Park Library.

November 14, 2018 - Club Meeting - 6:00 - 8:30 PM - University Park Library. **Because of the General Election and the Thanksgiving Holiday this will be the only meeting in November.**

December 5, 2018 - Club Meeting - 6:00 - 8:30 PM - University Park Library. **Wrap-Up of the "Cold War" Theme Build.**

December 19, 2018 - Club Christmas Party - 6:00 - 9:00 - Location to be determined.

January 2, 2019 - Club Meeting - 6:00 - 8:30 PM - University Park Library.

January 16, 2019 - Club Meeting - 6:00 - 8:30 PM - University Park Library.

February 6, 2019 - Club Meeting - 6:00 - 8:30 PM - University Park Library.

February 9, 2019 - JAXCON - University of North Florida.

February 20, 2019 - Club Meeting - 6:00 - 8:30 PM - University Park Library.

March 6, 2019 - Club Meeting - 6:00 - 8:30 PM - University Park Library.

March 20, 2019 - Club Meeting - 6:00 - 8:30 PM - University Park Library.

April 3, 2019 - Club Meeting - 6:00 - 8:30 PM - University Park Library.

April 17, 2019 - Club Meeting - 6:00 - 8:30 PM - University Park Library.

Member of the Year —Top Six

The Member of the Year is a program where points are awarded to members who participate in club events based on the schedule shown below. Points will accrue and the updated totals will be available at the monthly meetings. At the December Holiday Party the member with the most points will receive a printed certificate and their club dues for the next year will be provided gratis.

Category	Description	Points
1	Doing a Demo Presentation Program	5
2	Supporting a MCU outside event or presentation	4
3	Participating in a MCU Theme Build, Display or Contest	3
4	Contributing a Newsletter build or kit review article	3
5	Contributing a Newsletter model tip or referral	2
6	Entering a model in JAXCON	2
7	Referring a person to become a new MCU member	2
8	Referring a person to become a new IPMS member	1
9	Attending a Club Meeting	1
10	Presenting a Show & Tell Item	1
11	Paying your MCU dues on time	1

Member Name	Cat 1	Cat 2	Cat 3	Cat 4	Cat 5	Cat 6	Cat 7	Cat 8	Cat 9	Cat 10	Cat 11	Total
Dave Henk	5	16	12	30	12	2			15	15	1	108
Steve Betts	5	16	9	27	4				14	14	1	90
Bob Collado		18	9	18	24	2			10	8	1	90
Duane Hayes		20	12	6	18	2			13	7	1	79
Jim Stratton		24	12	12		2			13	13	1	77
Alan Zawacki		16	12		6				13	13	1	61

Theme Build "Anything That Floats"

The Third Quarter Theme Build was "Anything That Floats". The object was for members to build a subject that floated in or under the water. The interpretation of "Float" was not specific and, for the most part, the models adhered to a water theme. A couple came close to exceeding the limits of the envelope, but were able to avoid bursting the paper. There was two \$10.00 raffle prizes and they were randomly drawn. The winners were Alan Zawacki and Bill Giles. Congratulations to the drawing winners and thanks to all those members who participated in the build.



Seehund Midget Sub
By
Dave Henk



Volkswagon Beetle
By
Steve Betts
Hey, they do float!



USS Hornet
By
Don Alexander



TOON USS Lexington
By
Jim Stratton



Dornier Do 18-G1
By
Roger Page



Nautilus Submarine
By
Duane Hayes
From a Kid's Saturday Cartoon



Chris Craft Runabout
By
Alan Zawacki



Seafox Float Plane
By
Bill Giles



WWII Navy Coast Boat
By
Bob Collado

This Month In History by Duane Hayes

The events described in this article are taken from the web based site TheHistoryPlace.com which publishes monthly categorical events for general information and education. The purpose of the events presented is solely to inform modelers of historical facts and possibly help them to select a new subject to model based on the timeline reference. No attempt or intent has been made to confirm, qualify or correct events presented by the History Place site. Any questions, critiques, concerns or historical data challenges should be directed to the History Place web site utilizing the editor feedback link. Thank you.

October 1, 1908 - Henry Ford's Model T, a "universal car" designed for the masses, went on sale for the first time.

October 3, 1990 - After 45 years of Cold War division, East and West Germany reunited as the Federal Republic of Germany.

October 4, 1957 - The Space Age began as the Russians launched the first satellite into orbit. Sputnik I weighed just 184 lbs. and transmitted a beeping radio signal for 21 days. The remarkable accomplishment by Soviet Russia sent a shockwave through the American political leadership resulting in U.S. efforts to be the first on the moon.

October 8, 1918 - During World War I in the Argonne Forest in France, U.S. Sergeant Alvin C. York single-handedly took out a German machine-gun battalion, killing over a dozen and capturing 132. He was later awarded the Medal of Honor and the French Croix de Guerre.

October 11, 1939 - Albert Einstein warned President Roosevelt that his theories could lead to Nazi Germany's development of an atomic bomb. Einstein suggested that the U.S. develop its own bomb. This resulted in the top secret "Manhattan Project."

October 12, 1492 - After a 33-day voyage, Christopher Columbus made his first landfall in the New World in the Bahamas. He named the first land sighted as El Salvador, claiming it in the name of the Spanish Crown. Columbus was seeking a western route from Europe to Asia and believed he had found an island of the Indies. He thus called the island natives he met, 'Indians.'

October 13, 1775 - The United States Navy was born when the 2nd Continental Congress authorized the acquisition of a fleet of ships.

October 13, 1792 - The cornerstone of the White House was laid by George Washington. The building, located at 1600 Pennsylvania Avenue, is three stories tall with over 100 rooms, and was designed by James Hoban. In November of 1800, President John Adams and his family moved in. The building was first known as the "Presidential Palace," but acquired the name "White House" about 10 years after its completion. It was burned by British troops in 1814, then reconstructed, refurbished and reoccupied in 1817.

October 13, 1943 - Italy declared war on its former Axis partner Germany after the downfall of Mussolini and collapse of his Fascist government.

October 14, 1947 - U.S. Air Force Captain Chuck Yeager became the first man to break the sound barrier, flying in a rocket-powered research aircraft.

October 17-25, 1944 - The Battle of Leyte Gulf, the largest naval battle in history, took place off the Philippine Islands, during World War II in the Pacific. The battle involved 216 U.S. warships and 64 Japanese ships and resulted in the destruction of the Japanese Navy including the Japanese Battleship Musashi, one of the largest ever built.

October 28, 1919 - Prohibition began in the U.S. with the passage of the Volstead Act by Congress. Sales of drinks containing more than one half of one percent of alcohol became illegal. Called a "noble experiment" by Herbert Hoover, prohibition lasted nearly 14 years and became highly profitable for organized crime which manufactured and sold liquor in their private saloons called speakeasies.

"A Gathering in the Pines"

On Saturday, September 22nd MCU set up a booth at the Cecil Field POW*MIA Memorial Museum parking lot for "A Gathering in the Pines". Along with Veteran Organizations from Duval, Baker, Clay, Nassau and St. Johns Counties they gathered in remembrance of all POW-MIA's from all branches. Pictures provided by Steve Betts.



On the lighter side, here's a conversation courtesy of two youngsters ages approximately 9 and 12 visiting our booth at "A Gathering in the Pines" event.

1. We lost two World Wars to Hitler.
2. Hitler was killed by an A-7 Corsair!
3. World War II was so vicious only 100 people survived.
4. The F-15 is made of all Titanium and is indestructible.
5. The B-17 was the heaviest, baddest bomber and nothing could bring it down, not even jets!
6. Only 1,000 P-36's were built and carried .47cal bullets that could take out a bomber with only one bullet by hitting the engine.
7. A .50cal plane could take out an Abrams tank by hitting it with 8 rounds in the engine, fuel tank and ammo supply.
8. Any tank with a cannon carries only 10 rounds of ammo.
9. The A-4 Skyhawk is really an early version of the F-18 Hornet.
10. The F-14 is so fat with fuel it can fly for days!
11. The armor on the club table was all German (armor displayed was actually Vietnam thru Desert Storm and Desert Shield).
12. The battle display on the table was from the Vietnam War (actually it was the D-Day Diorama of the 29th Division coming ashore at Omaha Beach).

These kids were telling any visitors at the booth all these facts as if they had been there. We did not attempt to correct inaccuracies, perhaps because of bewilderment, or simply because we were smiling inside that these youths were at least trying. Of course after they went off with their mom we kind of set the record straight with a little laughter tossed in for the adults who hung around to see what our versions were. As you can see, attending an outside club event can often become informative and also very entertaining. Bob Collado

The Battle of Midway (Part 2) By Jim Stratton

Undoubtedly, one of the most important sea battles of World War Two was the one fought on June 3-4, 1942 off the island of Midway. This major sea battle was decided by aircraft alone as neither of the opposing naval surface forces ever saw each other. In my first installment I described the valiant effort of the three U.S. Navy's carriers torpedo squadrons using the antiquated Douglas TBD Devastator. The Devastator was outdated at the start of the conflict; however, at the time it was the only Torpedo bomber available to the U. S. Navy. It did have limited success in the battle of Coral Sea. Where Devastator torpedo strikes were responsible for sinking the Imperial Navy's light carrier Shoho, as well as a minesweeper and damaging the fleet carrier Shokaku. However, their fleeting glory ended with the battle of Midway. The Hornet launched 15 TBD's from VT-8 and the Enterprise launched 14 from VT-6. Of the 29 total launched that morning only 2 would return to the Enterprise. Not one torpedo strike was registered for the loss of 27 aircraft and crews. The main benefit of their sacrifice was the unescorted low level attack pulled the Japanese air cover down to sea level as they attacked the TBD's.

Following the launch of the torpedo squadrons the Hornet and Enterprise began launching their dive bombers, the Douglas SBD. The Hornet launched 35 SBD's from VB-8 and VS-8 and the Enterprise launched 37 SBD's from VB-6 and VS-6. Each of these aircraft was armed with a 1,000lb. armor piercing bomb. After recovering its scout aircraft, the Yorktown launched 17 additional SBD's from VB-3 as well as 12 TBD's from VT-3. The Yorktown's launching commenced around 8AM. By 9AM over 156 American aircraft were headed to the Japanese fleet.

The squadrons all became separated during the flight to the enemy and as a result the torpedo bombers made their attack unescorted. As stated earlier this drew the Japanese air cover down to sea level leaving the fleet unprotected above. By 10:20AM the American torpedo attack was over. The order was given to start launching the retaliatory attack and the Japanese carriers turned into the wind. It was then that the American SBD's struck. The Kaga was hit first. 4, 1,000lb. bombs struck the flight deck which was stacked with bombs removed from aircraft during the rearming from a land attack to a sea attack. The manned aircraft on the flight deck were all destroyed along with their crews. The second wave aircraft manned and being rearmed and refueled on the hanger deck were also destroyed.

The next carrier attacked was the Akagi. A 1,000lb. bomb hit the deck near the rear elevator and penetrated down to the hanger deck before exploding. The next bomb struck in the middle of the air group waiting their turn to launch. Their own bombs adding to the destruction of the carrier. As the flames reached the hanger deck the carelessly stored bombs and torpedo's exploded killing the second wave air crews and destroying all their aircraft as well.

The third carrier attacked was the Soryu which was hit by three 1,000 bombs in rapid succession. Once again all her strike aircraft and crews were destroyed while waiting to be launched on the flight deck. By 1045 hours the initial American attack was over with three of the Japanese carriers left as burning hulks. Only the Hiryu was left to launch a counter strike.

The Hiryu started launching aircraft at 1059 hours. This strike force consisted of 18 Vals and 6 Zeros, which was spotted by the Yorktown's radar. When the Japanese arrived the Yorktown had 28 wildcats airborne, and they destroyed 10 Vals while the flak batteries destroyed another 3. The Japanese did manage to strike the Yorktown with three bombs setting it ablaze. But, the damage control crews on the Yorktown put down the fires and began repairing the flight deck damage. By 1340 hours repairs were completed and Yorktown was able to launch their fighters again. A second strike from the Hiryu was launched consisting of only 16 aircraft; 10 Kates and 6 Zeros. The second strike was informed by the returning first strike that the Yorktown was ablaze. When they saw the Yorktown which was not burning, they thought they were attacking a second US carrier. They hit the damaged Yorktown again, which by then was making 24 knots. The Yorktown's CAP destroyed 5 Kates and 3 Zeros. 5 Kates did hit the Yorktown with 3 torpedoes and strike leader Lt. Tomonaga deliberately crashed his Kate into the Yorktown's flight deck. The Hiryu was preparing a third strike when the US finally located the ship and attacked. The Americans struck the Hiryu diving out of the sun and hitting the flight deck with four 1,000 lbs. bombs. 2 of the bombs hit the Hiryu amidships and 2 hit the forward flight deck. By 0255 hours on June 5, Yamamoto realized he had lost the battle and canceled the Midway attack and started to retire back to Japan.

'32 Ford Highboy Build by Dave Henk



The 1932 Ford was a very popular car model that was offered in several styles. They were a very popular car for Hot Rodders to customize as they were readily available and inexpensive at the time. The original Ford used a Flathead V-8. Some Hot Rod builders still use these however most opt for modern powertrains and disc brakes.

I can't believe I'm building another car model. Generally speaking I know squat about the car world. Not my thing! All my cars were to get me from point A to B. But at least I can now say that I know what some parts are and where they go. I

got this kit from a friend and decided to try building it. Basically it was built out of the box. I omitted a couple of items because I had issues with either the fit or appearance.

I left the two hood sides off so the engine could be seen. Why assemble and paint parts if they're not going to be seen. The windscreen was an ill fitting piece of junk, so I decided the driver should feel the breeze in his face.

The kit suggested colors and crazy decals were a no go for me. No surfer nonsense for me. I went for a clean look and painted the body Model Masters Interior Metallic Blue. Seats were done using a German Panzer color. The license plate decal was substantially bigger than the holder. I considered making a new one but decided life is too short to screw with it (besides it was that nutty west coast State).

I made a quick base and attached the model with silicone rubber. The end result was not too bad considering I seldom build or even look at car models.

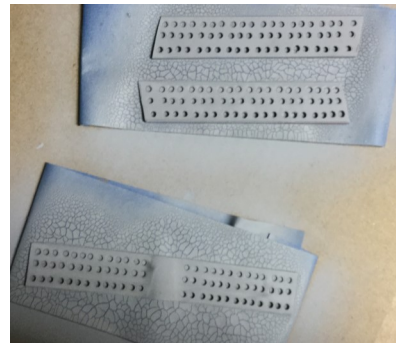


SBD Dauntless Build By Jim Stratton



For my second installment of my Midway theme build, I chose to build the Douglas SBD Dauntless dive bomber. The flight crews of the Dauntless affectionately called it the Slow But Deadly (SBD). For this build I used the Hasegawa 1/48 scale SBD. This isn't a bad kit but for some reason Hasegawa chose to mold it with the dive brakes solid instead of open. This made

it necessary for me to drill out all the holes in the diver brakes so I could model them open. Of course this is up to the modeler to decide if they want to take the time and effort to complete this task. It didn't take all that much time to drill them out. There are only 318 holes but I think it really adds to the finished model. After the drilling was completed I cut the brakes off the wings so I could model them slightly open. If I do this model again I wouldn't cut them completely off the wings as they were difficult to glue back on the wings after assembly. I would just cut the brakes at the right and left sides, leaving the front edge still attached to the wing. Then I would just bend them up a little to open a gap between the top and bottom brakes. You can't model them completely open as there are no inner ribs or gear mechanism as in the Accurate Miniatures release. After the brakes were drilled I painted the inner surfaces with Tamiya flat Red and put them aside until later. The rest of the kit is built OOB with the exception of adding lap belts for the pilot and rear gunner.



Once construction was completed I started the painting process. I masked the dive brakes so they could be painted with the rest of the model and painted the undersides with some Aeromaster Camouflage Gray FS36622. When that was dry I masked the under sides and then painted the upper surfaces with Aeromaster US Blue Gray.

The undercarriage was painted with Model Master Metalizer steel. I used a pair of Squadron True Details bulged wheels for the SBD and painted the 1,000 lbs. bomb olive drab.

Decals are a combination of markings from the Hasegawa kit (which were problematic) and an Aeromaster F4F sheet for the wing markings. The wing walks were cut from a Solid Black sheet. Markings are from a VS-6 aircraft flying off the USS Enterprise and is credited with a hit on the Soryu. The antenna wire is black EZ Rigging line.



All in all a fun build in spite of the usual BS from Hasegawa decals.



I do have more of the Hasegawa SBD's and some Accurate Miniatures kits in the stash waiting for a Guadalcanal "Cactus Airforce" build.



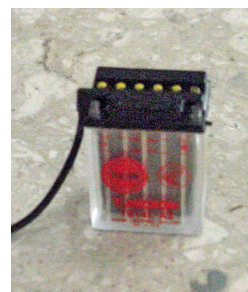
Building the Honda CB1100R by Steve Betts



The Honda CB1100R was an exotic Honda model produced in limited numbers from 1981-1983. It was a single-seat, fully faired sport bike based on the Honda CB900F. The R suffix denotes a racing version, however the CB1100R was a road legal machine produced by Honda and offered for sale to the public. The 1981 CB1100RB claimed 115hp @ 9000rpm. It was produced in numbers sufficient to meet the 'homologation' requirements for the R to be sold as a production motorcycle. It was Honda's first 'homologation special' and raced in most major markets: including Europe, Australia, New Zealand and South Africa. It was not sold in the USA.

I think that this is an older Tamiya 1/6 Big Scale #22 Honda CB1100R. The instruction manual was printed in 1982. The manual is eighteen pages long. There are two pages that show all the parts with a painting guide. Those two pages are removable so they are very convenient for looking up paint colors and sprue locations. There are a lot of assembly illustrations and photos of an actual model and the real motorcycle. There are several sprues that are plated with either chrome, silver or gold. There are also metal parts for the front forks and both front and rear suspensions work. There are decals included for the red body panels and a separate set of Honda decals in case you want to paint the red portions on the panels yourself. The decals in my kit were yellow so I chose to paint the panels.

Assembly begins with the main frame. I glued all those pieces together before painting everything red. The battery assembly is next. It even has the lead plates inside the battery case. The case was molded in clear plastic so I sprayed mine with flat clear to make it translucent like the real bike. I even toyed with the idea of pouring resin in to simulate the acid. There are Yusa decals for the battery case and an vent tube. You then add the breaker-less ignition system and oil tank before installing it in the frame.



The next assembly is the lower crankcase. I glued all the pieces together and then painted it flat black before adding the gold crankcase end plates. I used a Molotow chrome pen and gave all the engine bolts a chrome color. The lower crankcase is mounted in the frame with a couple long threaded rods. Next is the engine air box and electrical panel. The panel even has the relays that the real motorcycle uses for high current devices. Next is the cylinder and carbs assembly. I painted the cylinders flat black before adding the rest of the chrome bits and again used the Molotow marker on the bolt heads. The carbs have the pull-pull throttle linkage included. There are also some oil lines to add. The cylinder

assembly is glued to the top of the crankcase and the air box is adjusted to mate up with the carb air inlets. Finally you add the clutch linkage and clutch cover.

In step fourteen assembly begins on the rear suspension swing arm, brake, drive sprockets and chain assembly. The chain and sprockets are molded as one piece and do not rotate. I took some extra time to paint the separate chain links and used some black wash to make the chain pins more visible. The foot rest plate assemblies are next. The rear brake pedal is even spring loaded so that it moves. There are a couple of warning decals to put on the chain guard.

Continued on the next page



Building the Honda CB1100R (Part 2) by Steve Betts

Continued from Page 12

The rear swing arm is attached to the main frame with a long threaded rod and the rest of the rear brake lines are attached. Each rear shock is assembled from nine parts and has a manufacturer's logo decal for the top section. After adding the rear fender and shocks to the frame you install the transmission cover with the shifter linkage and toe pedal. The rear wheel is gold plated and I used the Molotow chrome pin to add the highlights to the spokes and rim sidewalls. After painting the brake rotor the entire assembly is attached to the swing-arm with another long threaded rod.



To finish the back of the motorcycle you add the brake and turn signals plus a rear reflector. The kit has internal chrome inserts to make all the rear facing lights look real. You also can choose between an American or Japanese license plate frame. Next up is the exhaust pipes. You start by bolting the back megaphone section to the frame. You install the collector followed by four individual cylinder pipes. Everything fit together really easy and was solid even before the glue dried.



In step twenty five you start working on the front fork assembly. The handle bars are first. There is a lot of switch detail and the hand grips are molded out of soft black vinyl. The bridge assembly is next and has separate decals and plastic covers for the speedo and tachometer. The top portion of the forks are made with a couple of pieces of chrome metal tubing with a metal inner frame. The bottom shock section is gold plated but I had to sand the seam and paint them gold instead of using the plated finish. The speedo and tach each have separate drive cables. I painted the front wheel like I did the rear one. The molded rubber tires have nice detail and you can see the sidewalls actually flex when the motorcycle is sitting on its tires.

Step thirty three through step forty finish everything up by adding the fuel tank, seat, body panels and front cowling. The front headlight even has a plastic part to represent the light bulb. I used 1/8 pin striping tape to outline the red areas on the body panels. After I added the decals I brushed on a coat of Future floor finish to finish off the outer panels.

I thought the final results looked very real and the level of detail was impressive. This was a really fun model to build and I would not hesitate to build another one. It looks like Tamiya still makes twelve 1:6 big scale motorcycles models if you want to attempt building one.



September Gallery



Avro Vulcan
By
Danny Bray



1980 Volare Roadrunner
by
Alan Zawacki



Pontiac Banshee
by
Dave Henk



German Wasserschlepper
by
Jack Ratterman



Hawker Hurricane
By
Jim Stratton



F-14A Tomcat
by
Steve Betts



F-86 Sabre
by
Don Alexander



Corvette Dragster
by
Dave Sheppard



1976 Mustang
by
Bill Giles



Pearl Harbor P-40
by
Thad Robinson



Corvette Dragster 2
by
Dave Sheppard



Gundam Trooper
by
William Andersson

September Gallery



B-58 Hustler
By
Danny Bray



Donald's Cruiser
by
Alan Zawacki



KV-2 Tank
by
Dave Henk



F-18 Hornet
by
Clint Dodds



Supermarine Spitfire
By
Jim Stratton



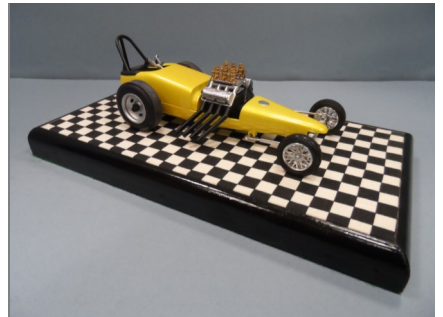
1:1 Star Wars Helmet
by
Daniel Andersson



Sopwith Snipe
by
Don Alexander



F-100 Super Sabre
by
Wes Woodruff



Slingshot Dragster
by
Bill Giles



Japanese 75mm Gun
by
Dave Henk



A-1 Skyraider
by
Wes Woodruff



Roland C-2
by
Don Alexander

IPMS Information



IPMS/USA is an organization dedicated to the fun of Scale Modeling. Yearly membership includes the IPMS Journal six times a year, which is full of stories of interest on modeling subjects such as aircraft, armor, automotive, ships and figures. There are full listings of IPMS contests and swap meets, hints and tips, and reviews. Being a member also allows members to participate in IPMS/USA sanctioned Regional Contests, and the world-famous National Convention, held every summer. You'll also have access to the online Member's Forum where a wide variety of society and modeling topics are discussed. In addition, many hobby shops offer discounts to IPMS/USA members.

To join IPMS/USA, simply mail in the form below or go to www.ipmsusa.org and click on the Join IPMS/USA button on the right side of the menu banner.

AUGUST 7 - 10, 2019

IPMS/USA MEMBERSHIP FORM

IPMS No.: _____ Name: _____
Address: _____ If Renewing _____ First _____ Middle _____ Last _____
City: _____ State: _____ Zip: _____
Phone: _____ E-mail: _____
Signature (required by P.O.) _____
Type of Membership ☐ Adult, 1 Year: \$30 ☐ Adult, 2 Years: \$58 ☐ Adult, 3 Years: \$86
☐ Junior (Under 18 Years) \$17 ☐ Family, 1 Year: \$35 (Adult + \$5, One Set Journals) How Many Cards? _____
☐ Canada & Mexico: \$35 ☐ Other / Foreign: \$38 (Surface) Checks must be drawn on a US bank or international money order
Payment Method: ☐ Check ☐ Money Order ☐ Credit Card (MC/VISA/DISC)
Credit Card No: _____ Expiration Date: _____
Chapter Affiliation, (if any): _____
If Recommended by an IPMS Member, Please List His / Her Name and Member Number:
Name: _____ IPMS No.: _____

IPMS/USA

Join or Renew Online at: www.ipmsusa.org

P.O. Box 56023
St. Petersburg, FL 33732-6023