

Volume 47
Issue 10

October
2018

RICHARD I. BONG CHAPTER



The Newsletter of Milwaukee, Wisconsin's Richard I. Bong Chapter, International Plastic Modelers Society • USA

Officers:

Editor: Jeff Neal,
N50W15770 Maple Crest Ln,
Menomonee Falls, WI 53051,
262-373-0695,
jneal@mcdilldesign.com

President: Paul Boyer
1969 Lakefield Rd, Cedarburg, WI
53012-9110, 414-531-7026,
airflower2@icloud.com

Secretary: John Plzak
2112 W Kimberly, Milwaukee, WI
53221-5061, 414-282-7808,
jplzak@wi.rr.com

Treasurer: Jim Zeske
8228 S. Forest Meadows Dr.
Franklin, WI 53132-8940,
414-529-5208,
p51bmustang@msn.com

Chapter Contact: Jim Erfert
W169 N8924 Hoyt DR #4,
Menomonee Falls, WI 53051
414-526-7160
jim.erfert@gmail.com

The Wingman newsletter is published
monthly by the R.I. Bong Chapter,

Membership is Free

All contents of the Wingman are for
the enjoyment of the members.

Permission to reprint any material
is not required, but please credit
"IPMS Richard I. Bong Wingman."

Deadline for submissions is 10 days
prior to the next "General meeting".

General Meeting Friday, October 12 Water Stone Bank 6560 S. 27th Street
Doors open at 7:00 p.m. Meeting starts at 7:30 p.m.

Business Meeting Wednesday, October 17 at Baker's Square 4900 S. 76th St.,
Meeting begins at 5:30 p.m. • All members are welcome!

What the §*&%≈Σ√!

The theme for the upcoming October 12 meeting is "Box of Crap" – sorry for the strong term. But I think we've all come across at least one model kit that was either depressingly disappointing in the box, disappointingly difficult to put together, or difficultly depressing to look at when finished. If you have a kit or a finished model that fits any or all of these descriptions, bring it to the meeting and tell us a bit about it. We've all been there. "Hi, I'm Paul and I am a modeler." "Hi Paul." "I fell off the wagon and bought another Mach 2 kit . . ."

I should tell you about a model I built but can't bring in to show – it's on display at the Mitchell Gallery of Flight Museum in the Milwaukee airport terminal. I was hired to build a 1/32 scale P-80A Shooting Star to accompany a 1/32 X-1. See, Chuck Yeager was the first person to land a JET in Milwaukee. Now this was decades ago, long before there was an injection-molded 1/32 P-80, so I tried to build the Combat Models vac kit of the jet. Combat produced many unique kits back then, and each one I've seen was a poor representation of its subject. They included vague vacuum-formed shapes that could be mistaken for airplane parts, but nothing for details like landing gear and cockpit. The fuselage halves wouldn't mate up and the stubs for the horizontal stabilizers were about 1/8" different in elevation. But I worked around it and used paint to make the model look more detailed than it was. That's my story, so tell us about your "Box of Crap."

Also at the meeting, we'll take nominations for club officers. All of the current officers are getting a bit long in the tooth (OK, you may have to Google that term), and we have to start thinking about making some personnel changes soon.

See you at the meeting!

— Paul Boyer

Upcoming Events Compiled by Jim Erfert

October 7 • West Allis, WI

Downtown West Allis Classic Car Show
70th to 76th and Greenfield Ave., West Allis, WI
10am-3pm

October 13 • Racine, WI

EAA Chapter 838, "AVIATION FUN FEST"
Batten International Airport, 3333 N. Green Bay
RD, Racine, WI www.eaa838.org

October 13 • Johnstown, WI

Grand Slam NNL #3, Toy and Model Swap Meet
Johnstown Community Center
9937 E. County Road A, Johnstown, WI
Alex Drake, 262-661-4434,
mastermodeler1950@gmail.com

October 27 • Milwaukee, WI

18th Annual Larry Peters Classic Model Art Show,
"THE HAM SHOW" Lake Lodge Masonic Hall,
1235 E. Howard Ave. Milwaukee, WI 53207
Michael Luedke Highlanderforensic@sbcglobal.net

November 3 • Oshkosh, WI

21st Annual Winnebago Area Model Classic &
Swap Meet. Oshkosh Hilton Garden Inn,
Exit 116 East from Interstate 41.
For More Information Call Don Molitor 920-420-1430
email WAMClassic@gmail.com
Website WAMClassic.wix.com/wamc

November 10-11 • West Allis, WI

State Fair Park, 9am-5pm

November 17-18 • Rosemont, IL

Muscle Car & Corvette Nationals
Donald E. Stephans Convention Center,
Rosemont, IL
WWW.MCACN.COM

December 2 • Milwaukee, WI

Classic Plastic 3rd Annual Scale Auto Swap Meet
On the Edge, 68th street & Edgerton (N/E corner)
Ron Keller 414-769-0586, Daryl Geske 414-
573-6604

December 16 • Waukesha, WI

Milwaukee Miniature Motors, Annual Holiday
Show Waukesha County Expo, 1000 Northview
Road, Waukesha, WI 53188
Jim Welytok 262-366-1314, unievents1@aol.com

January 19, 2019 • Darien, IL

Planes, Trains and Automobiles Plastic Model Kit
& Model Railroad Swap Meet and Show
Saint John Lutheran Church, 7214 Cass Ave.
Darien, IL, 60561. 9 am to 3 pm, Approximately
6 blocks S. Of I-55 and Cass exit.

Flyers w/maps for these events are sometimes
available at the general meetings or by calling
me. Please take copies only if you plan to attend.
The IPMS/USA website has info on most of these
events. Check it out.

Jones' Thoughts by Al Jones

Rain . . . and more rain. Sunday, September 30, a gray rainy day. It might just be a good day to get the snow tires installed on the truck. However . . .

The distribution of the Fujimi model kits from my private collection/stash at our September club meeting that are to be used for my next private contest went well. To begin with, I had seventeen kits to hand out. All of the kits were 48th scale and had been produced back in the day. In 1970, Fujimi started producing airplane models in 1/72 and 1/48 scales and continued up into the early 1990s. The kits sat on a shelf in my basement since the '70s and '80s without being disturbed. Without opening the boxes in all these years, it seems that most of the kits were as packed with plans printed in Japanese and decal sheets in perfect condition. Art Giovanonni called to say that a propeller was missing from a kit he chose, a Bf109G-K. He told me that he would try to find a proper propeller in the aftermarket.

Anyway, all the kits were taken for the contest except for two of them, a Bf110D and an Fw190D-9. Since all the assembly instructions in these kits are printed in Japanese, and the decals are/may be beyond usage in age, modelers are allowed to do anything to these kits that their imagination devises. Finished kits are due for show at the March 2019 club meeting with an extension possible at the request of the builders.

Experience tells me that these kits do show their age when the modeler begins test fitting parts. Canopy fits can be sloppy. Some of the kits have parts for installing electric motors. Wing fits to the fuselage can be good on one side; but, the other side can be a challenge. Landing gear mounts can be vague. Tail wheel installation must be done before fuselage halves are joined. Ohhhh, boy! Lots to think about.

So, I wish all 14 (Art took two kits) of you much good fortune. I hope the building experience will be enjoyable.

—AJ



The Trilogy Connection October Update

As you can see from the included pics things are going well (for some of us anyway). Jeff has brought this really cool jig over, and is working on getting things together. It has been neat watching its progress and we can't wait to see it finished. It's really colorful.

Ed has his fuselage closed up and had his first experience spraying Acrylic paint, shooting a coat of the base gray color for his Albatross.

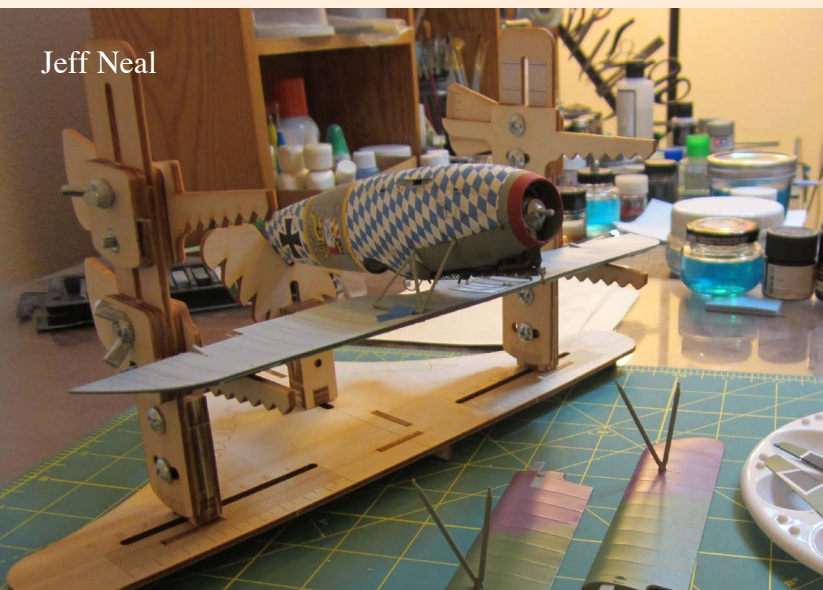
Although he was somewhat apprehensive, things went well and we think he may be getting drawn over to the Acrylic side!

As for me, well, I still wasn't pleased with the finish on my Pfalz and while trying to tone down the weathering I just made it worse. So out came the Castrol Super Clean, it was a little tedious cleaning around the cockpit and engine compartment, not wanting to screw up their respective paint jobs. But it is now stripped clean, ready for its new scheme!

See you at the meeting! —Jim



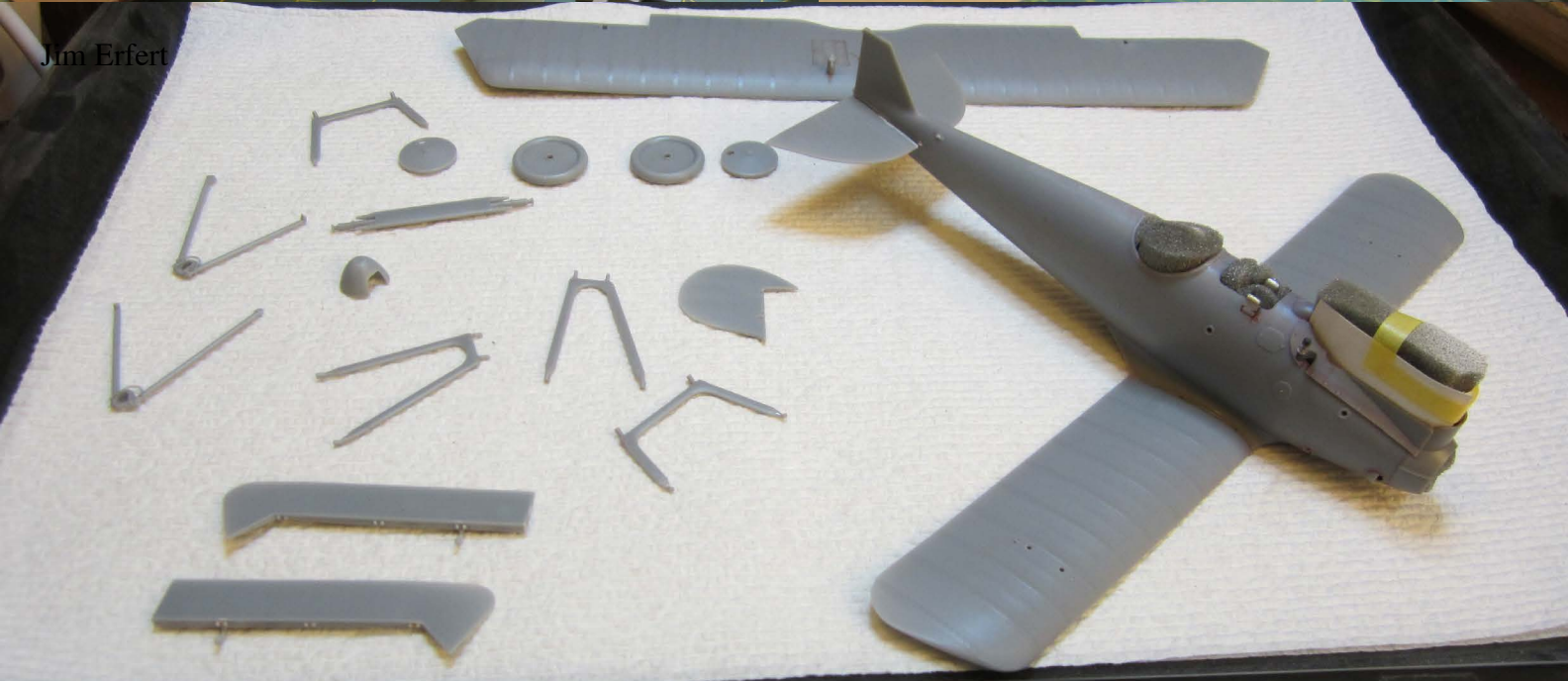
Jeff Neal



Ed VanBrabant



Jim Erfert



Secretary's Notes by John Plzak

Nine members attended the September business meeting. Our auction last month was another big success. Funds raised from this auction keep our dues low (you can't get any lower than free), but also provide kits for our monthly door prize raffle. We also use the funds to help support the various modeling shows around our area and well as the local and national IPMS events. Thanks go to Paul, Tom, Jeff, and Wayne for all of their work with the auction and to all the members who bid even if they didn't win.

Have you ever bought a kit because of its subject and upon opening it with growing expectation went, OMG what have I just bought. This kit is a BOC (box of crap). I know I have and I expect many of you have as well. Well bring that BOC to the October meeting built or unbuilt and will give you a few minutes to talk about why it's a BOC. We will also be taking nominations for club officers at the meeting.

Of course the November meeting will feature our annual club contest. Contest Chairman John Werwie has things well organized again this year, and I suspect that things will run even smoother than last year. Bring lots of models (there is no entry fee). Let's fill up those tables. We will also

have the elections for officers if needed in November.

The December meeting will feature our Christmas party. We will have a usual feast with the main course and soda provided by the club and side dishes, deserts, and snacks brought by the members. This is the **ONLY** meeting where we allow food in the meeting room. Please be careful and if you do have an accident please clean it up promptly. Our access to this meeting place is based on us keeping it clean. There will also be the presentation of the awards from the November contest, the member of the year award, as well as the gift exchange and while I haven't heard anything yet, possibly a visit from that jolly old elf Santa himself.

That's it for this month. I'll see you at the meeting.

— JP

2018 Meeting Schedule

Oct	Officer Nomination, BOC night
Nov	Annual Contest
Dec	Christmas Party, Awards Presentation

Ed's Car Corner by Ed Doering



Moebius/Model King - Arnie "The Farmer" Beswick's "The Comet" 1965 Mercury Cyclone A/FX
Kit Number – 1223 • Scale – 1/25 • Skill Level 3

The birth of drag racing, as is often told, was a by-product of the aftermath of WWII. But, many will argue that the real birth of drag racing occurred in the 1960's. Fierce competition between manufacturers in the stock classes - with Chevy versus Ford or Dodge versus Mercury dominating the land-

scape. Match races at tracks throughout the country brought large crowds to cheer their favorite. Then, with the likes of Dick Landy, the Ramchargers, Roger Lindamood, Sox & Martin and a host of others, racers began experimenting with altered wheelbases. That led to lighter bodies, fuel injection, and a host of other changes. That's when the real war started.

The early 1964 and 1965 Comets were factory built and then sent out for modifications. The frames were lighted up and other modifications made. The A/FX meant 'Altered Factory Experimental'.

Men like Arnie "The Farmer" Beswick and Dyno Don Nicholson, both superb engine tuners, began their racing career in the 40's and 50's. As the factory drag racing wars began to escalate in the mid 1960's, Beswick and Don were two of the individuals leading the pack, often ending up in the winner's

circle with their Mercury Comets.

As manufacturers realized the potential of winning results and how it translated to sales, they became more involved in the activity. Guys like Beswick and Don raced for fun and money. The fun became a business and the money became important. There were many racers in the 1960's that caught the attention of the factories. Guys like Jack Chrisman, the Dodge Chargers, The Ramchargers, Dyno Don, Dick Landy, Gas Rhonda, and many more helped propel the factory experimental class in the mid 1960's. As they experimented with altering the wheelbase, supercharging or injection, bigger slicks, transmission, etc., the factory wars were in full swing.

Moebius, who I consider the industry leader in the production of 1/25 scale model cars, (now that Revell has gone under), has been producing some highly detailed, outstanding model kits of late. Their Hudson Hornets took car modeling by storm, and this new Mercury Comet A/FX kit will well be in the running for "Kit of the Year" amid 1/25 scale model car kits.

The kit comes with the famous Ford 427 cubic inch, single overhead cam factory experimental drag engine, the dual snorkel hood, Cragar wheels and drag slicks, a complete drag racing suspension and interior, and colorful hi-quality decals to replicate the Arnie Beswick Comet A/FX.

There are multiple trees of medium gray plastic, flash free parts, including a tree of clear plastic parts for the windows, and bagged chrome parts. The chromed valve covers have indentations on them to show where to drill holes for spark plug wiring. Realistic rubber-like racing slicks and front tires are also included.

The large, fold-out, poster-like instruction manual features Beswick's car, and the front page includes important instructions for building the kit, although most good modelers already know these steps.

The back page features the suggested paint colors for all the parts making up this kit. There are also full color pictures of what the interior, frame, engine, and completed decaled car should look like. References are also given for Model Car World lacquer paints, as well as Bob's Paints.

There are six assembly blocks to complete this

model, and within each block, there are minor sub-assemblies, lettered A-G. Each sub-assembly deals with few parts, and it is IMPORTANT to follow the written out instructions per block, as well as the diagrams for each block.

Construction begins with block one, in which the two engine block halves are glued up. It's important to follow the written out instructions in order, for ease of assembly of the engine. Be sure to align the engine block halves evenly, to allow for the intake manifold, cam cover, and cylinder heads to mate well with the engine block.

In assembly block 1-B, the valve covers, and transmission halves are added to the completed engine block. Be sure to sand out the seam created on the transmission, and insure proper mating of the transmission with the engine block.

In block 1-C, the water pump, starter, coil, oil filter, and radiator hose all get added. Allow for drying time of all these parts, before moving on to the next sub-assembly.

In block 1-D, the fan, pulleys and fan belt, and alternator are added.

In block 1-E, the two 4-barrel carbs which should be painted with a mixture of Metalizer Brass and Aluminum, are glued to the intake manifold. You are given your choice of the stock oval air cleaner, or the correct drag racing air cleaners. A distributor is included, which can be drilled out for plug wires, but it's far easier to go with a pre-wired distributor. The upper radiator hose is also added in this block. The completed engine assembly should now be set aside for all parts to dry completely.

Block two concerns assembling the front wheels and tires, along with the rear wheels and drag slicks. The wheels simply press into the tires.

Now we come to the most difficult block in the assembly of this kit – the chassis. I highly recommend that parts be dry fitted, and their proper location well identified, before gluing of the chassis parts.

In block 3-A, the left and right engine mounts are added to the frame. These must be aligned straight and even, to allow for the engine to fit into the frame. It's also important to take ONE ASSEMBLY AT A TIME in construction of the chassis parts, to allow for hardening of the glue before adding additional parts.

Once the engine mounts are completely dry, the left and right exhaust headers are glued together, and they should then be placed aside to dry well.

Then in step 3-B, you carefully position the headers in the frame, being sure to center the space between the header tubes over the engine mounts. DRY FIT to insure you see/know how the headers should be placed. Then, take your completed engine assembly, and insert it into the frame. Once it's centered on the engine mounts, you can fit the headers to the exhaust ports on the cylinder heads.

In step 3-C the wheel locator pins are placed into the left and right front spindles. Let this assembly dry well before proceeding. Once dry, you can add the backing plates.

In step 3-D the left front shock tower is glued to the left inner front fender, and set aside to dry. Likewise, with the right shock tower and inner fender. When dry, you follow with the left spring, and left upper suspension arm. These constructions **MUST** be allowed to dry before the next procedure. Then, you do the right shock tower, right inner fender etc.

In step 3-E, the master cylinder is added to the firewall, and the firewall's added to the frame. Then, the spindle assemblies are added, and cemented to the left and right inner front fenders. Care and attention **MUST** be taken to insure the spindles are correctly placed left and right.

In step 3-F, the lower radiator hose and upper radiator hose are cemented in place. Then, the radiator core support is added, making sure that the radiator hoses are properly located. You then add the horns and hood latch.

In step 3-G, the rear axle is glued up, and the rear brake backing plates are added. Then, add the left and right rear springs, and add the drive shaft to the rear axle. Then add the left and right shocks. Now cement the rear axle assembly to the frame, making sure that the front locator pin in the drive shaft fits the transmission. Next, add the transmission cross member to the frame floor, and add the traction bars, and steering tie rod. This completes the entire frame assembly.

In step 4-A, the pedals, tachometer and small gauge cluster are glued to the dash. Next, cement the steering wheel and steering column to the dash.

In step 4-B, the left and right interior side panels

are added to the floor, followed by the back seat elimination panel. Then, add the completed dash. Next, add the shifter and seats. Assemble the roll bar, and add it in place in the interior. This completes the interior. The interior color for all the A/FX Comets was bright red.

In step 5-A, we deal with the body. All the A/FX Comets were painted gloss white. First, install the rear view mirror to the inner roof of the body. Next, add the left and right vent windows, and allow to dry. The vents fit from **INSIDE** the body, so use care, and use glue meant for clear parts here. Then, add the rear backlight and windshield. These parts glue in from the **OUTSIDE** of the body.

In step 5-B, the four headlights glue into the grille. When dry, the grille is added to the front of the body, followed by the rear body panel. Then add the door handles. A/FX drag cars did not use wipers, so you can eliminate them.

Finally, we come to block 6. In block 6-A, install the body over the completed interior and frame. Then add the front stone shield to the front bumper, and attach this front bumper assembly to the body.

Next, add the rear bumper and tail light panel to the body. Follow that with the front and rear wheel/tire assemblies. Add the hood, and that completes the model!

Follow the back page decal placement pictures to add the Beswick decals. For those not wanting to build Beswick's car, there are alternate decals available thru SLIXX DECALS, for the "Dyna Don" Nicholson, and Hayden Proffitt Comets. The Nicholson decals are the most colorful of the A/FX Comets.

This kit is not recommended to the beginner car modeler. The entire assemblies in step 3 are complex, and require some advanced building skills. I rate the Skill Level at 3-4.

—ED

There were 33 model Information cards filled out. Please make sure you fill out the Model Information cards. **Please fill them out clearly.** I enter what I can read and my eyes aren't what they used to be. **Also please leave them on the display table.** The format of this list is: Modelers name, Item being displayed, Kit Manufacturer and Scale.

*Editors Note: In an effort to show more club models I have added more pages of finished models.
If you do not see your model it is because I could not see the name card associated with the model in the photo.*

Chuck Davis Corsairs AFV Club 1/144, L-19 Birdog Mini-wings 1/144, Westland Lysander SOE Matchbox 1/32
Tom Foti 6 Rad Tamiya 1/35
Mike Klessig Lamborghini Diablo GT Aushima 1/24, Lotus 49B Ebbro 1/20
Paul Johnston Ford Escort Cosworth Tamiya 1/24
Dave Hansen OV-1C Mohawk Hasegawa 1/72
Bill Cook Orange Hauler Monogram 1/24
John Clancy 2010 Space Station Martin Sanger (paper), Draken J35 Stahlhart Papercraft 1/60 (paper), Gundam Bust Andy Kong 1:1.5 (paper), T-Rex Skull Gedelgo 1/4 (paper)
Al Jones 1932 Cadillac V16 monogram 1/24
Phil Pignataro BSG Cylon Raider Moebius 1/72, F-21A KFIR Italeri 1/72
Chris Cortez F-5E Kitty Hawk 1/32, Merkara Meng 1/35, Luke Skywalker Bandi 1/12
Jeff LaMott Vamperella ? 1/6
Jay Wichmann Diorama Minicraft 1/1200
Matt Walker Flanker Su-35 GWH 1/48
Art Giovannoni Ambulance Peerless 1/35, M*A*S*H Heli-copter Revell 1/35
Dennis Tennant P-47D Razorback Academy 1/72

Ed Doering F-100D Trumpeter 1/48
Vic Rood 1965 Plymouth Belvedere Moebius 1/25
Mike Scharf Bandvagn 206S Takom 1/35, Type 16 MCV Tamiya 1/35
Walt Fink Jet Provost T.3 Airfix 1/72
John Frevele 1932 Chrysler Imperial Roadster AMT 1/25
Andy Keyes P-63A Kingcobra Dora Wings 1/48, P-63E Dora Wings 1/48
John Plzak GeeBee R1 Dora Wings 1/48
Paul Boyer FH-1 Phantom Special Hobby 1/72



Dave Hansen OV-1C Mohawk Hasegawa 1/72



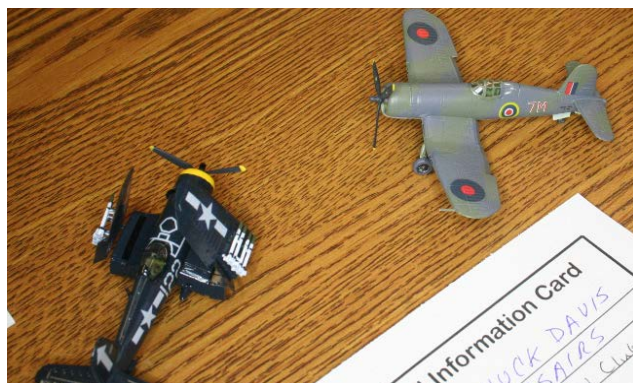
John Clancy Draken J35 Stahlhart Papercraft 1/60 (paper)



Paul Boyer FH-1 Phantom Special Hobby 1/72



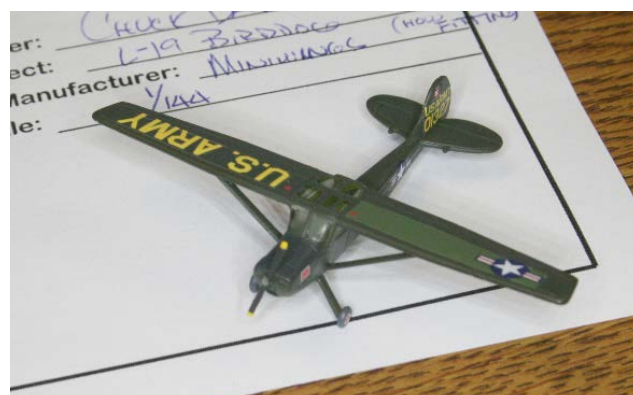
Walt Fink Jet Provost T.3 Airfix 1/72



Chuck Davis Corsairs AFV Club 1/144



Chuck Davis Corsairs AFV Club 1/144



Chuck Davis L-19 Birddog Miniwings 1/144



Walt Fink Jet Provost T.3 Airfix 1/72



Andy Keyes P-63A Kingcobra Dora Wings 1/48



John Plzak GeeBee R1 Dora Wings 1/48



Phil Pignataro F-21A KFIR Italeri 1/72



Chris Cortez F-5E Kitty Hawk 1/32



Matt Walker Flanker Su-35 GWH 1/48



Chuck Davis Westland Lysander SOE Matchbox 1/32



Dennis Tennant P-47D Razorback Academy 1/72



Ed Doering F-100D Trumpeter 1/48



Tom Foti 6 Rad Tamiya 1/35



Tom Foti Centurion AFV Club 1/35



Mike Scharf Type 16 MCV Tamiya 1/35



Mike Scharf Bandvagn 206S Takom 1/35



Mike Klessig Lamborghini Diablo GT Aushima 1/24



Mike Klessig Lotus 49B Ebbro 1/20



Paul Johnston Ford Escort Cosworth Tamiya 1/24



Bill Cook Orange Hauler Monogram 1/24



John Frevele 1932 Chrysler Imperial Roadster AMT 1/25



Al Jones 1932 Cadillac V16 monogram 1/24



Jeff LaMott Vamperella ? 1/6



Vic Rood 1965 Plymouth Belvedere Moebius 1/25



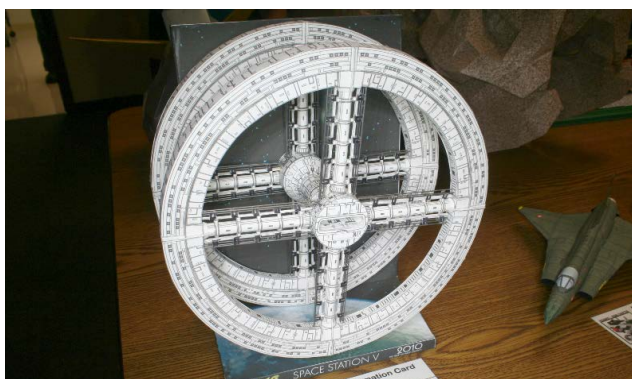
Jay Wichmann Diorama Minicraft 1/1200



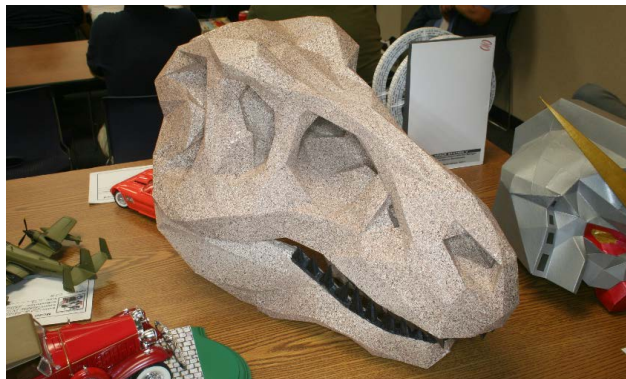
Chris Cortez Luke Skywalker Bandi 1/12



John Clancy Gundam Bust Andy Kong 1:1.5 (paper)



John Clancy 2010 Space Station Martin Sanger (paper)



John Clancy T-Rex Skull Gedelgo 1/4 (paper)



Art Giovannoni M*A*S*H Helicopter Revell 1/35



Phil Pignataro BSG Cylon Raider Moebius 1/72,

2017 Annual Club Contest by John Werwie

Friday, November 10, 2017 is this year's annual club contest. All registered members are invited to enter a model(s). Entering a model unequivocally shows your commitment and support to the R.I Bong Chapter club.

Model Categories

- Juniors (under 17 years of age)
- Ships (all scales)
- Dioramas/Vignettes (all scales)
- Figures (all scales)
- Open (what does not fit into the other listed categories is entered in the "Open category)
- Car, Truck, and Cycle - Competition
- Car, Truck, and Cycle – Non-Competition
- Military Vehicles – Fully-tracked
- Military Other - Partially tracked, wheeled, artillery and other (all scales)
- Aircraft –Props (1/72, 1/100, 1/144, 1/200, etc.)
- Aircraft –Jets (1/72, 1/100, 1/144, 1/200, etc.)
- Aircraft –Props (1/24, 1/48, 1/32)
- Aircraft – Jets (1/24, 1/48, 1/32)
- Best of Show (one model)

Fee:

- None

Model eligibility:

- Any model built by the entrant is eligible for entry. The only restriction is that the built model must not have been entered in any previous R.I. Bong Chapter annual contest.

Awards:

- *This year more Gold, Silver and Bronze recognitions will be awarded*

Judging:

- Club members present at the annual contest evening are eligible to judge.

Best of Year

- The Best of Show is selected by voting club members in attendance. This model receives only this award, allowing other models an opportunity in the entered category to receive an award.

Annual Recognition Ceremony

- Awards shall be presented during the Annual Holiday Celebration/Gift exchange at the club's December.

Inclement Weather:

- Due to inclement weather causing low attendance at the November annual club contest, members present would vote on whether to hold the contest or postpone the contest to the December meeting. Awards then would be presented during the January meeting.

MODELCLUB
A PROJECT OF WISCONSIN 4-H
RECIPIENTS OF A PRESIDENTIAL COMMENDATION FOR SERVICE TO
THE ARMED FORCES
RECOGNIZED BY THE US CONGRESS FOR COMMUNITY SERVICE
PRESENTS
THE 18TH ANNUAL
LARRY PETERS CLASSIC MODEL ART
SHOW

Presented In Association With Forensic Research Associates

“THE HAM SHOW”
SATURDAY OCTOBER 27, 2018

**OPERATION
BAGHDAD BEAVER**

**2 FREE 1.00 RAFFLE
TICKETS FOR EACH
REGULAR MODEL KIT
DONATED**

**ALL MODELS RAISED
GO TO
ZABLOCKI VA HOSPITAL
REHABILITATION
DEPARTMENT AND
DOMICILIARY**

**LAKE LODGE MASONIC HALL
1235 E. HOWARD AVE.
MILWAUKEE, WI. 53207
(IN ALMOST MYTHICAL BAY VIEW)**

**REGISTRATION 9:00AM – 12 NOON
RAFFLE 2 PM
AWARDS 3 PM**

**SHOW JUDGED PER
MODIFIED CHICAGO RULES**

ENTRY FEES

**\$ 5.00 FOR THE 1ST MODEL
\$ 3.00 FOR SECOND MODEL
\$1.00 EACH FOR 3RD MODEL AND AFTER**

**SPECTATORS SUGGESTED DONATION \$ 1.00 PER PERSON
FIRE, POLICE, EMS AND ALL US MILITARY WITH ID AND ALL US MILITARY AS SPECTATORS FREE
All Lodge Members Free**

ALL MONEY RAISED WILL BE DONATED TO
THE RONALD MCDONALD HOUSE CHARITIES OF EASTERN
WI.

**ADULT GRAND CHAMPION PRIZE
A BUTT PORTION 1/2 BONE IN SMOKED HAM 6-8
LBS**

**ADULT RESERVE GRAND CHAMPION PRIZE
A 15 LB OR LARGER
TURKEY**

**JUNIORS GRAND CHAMPION
THE RICK TAYLOR AWARD**

**JUNIORS RESERVE GRAND CHAMPION
THE STEVE MALIA AWARD**

**THE ERIC ANDERSON AWARD
BEST HANDPAINTED MODEL AIRCRAFT**

**BILLY MITCHELL AWARD
BEST TWIN ENGINED BOMBER**

Aviation Fun Fest

*Celebrating Racine's Rich
Traditions of Aviation and Community*
Saturday, October 13, 2018

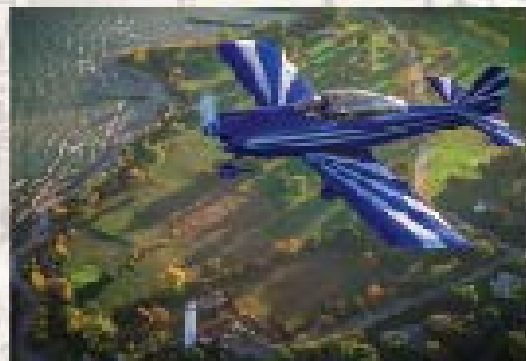
**FREE
ADMISSION**

**EAA Chapter 838
Batten International Airport
3333 N Green Bay Rd, Racine, WI**

8:00 a.m.- Noon

Everyone's Favorite Pancake Breakfast

Adults \$7, Children \$3



8:45 a.m.

Young Eagles Rally

Youth ages 8-17

- learn about aviation,
- fly with a pilot
(weather permitting)
- try our flight simulators

BREAKFAST MENU
Pancakes
Sausages
Scrambled Eggs
Coffee

**FREE
ADMISSION**



11:00 a.m.-2:00 p.m.

Community Partners Bar-b-que

Hamburgers, Hot dogs, Brats, and Beverages for sale

Our Thanks to:

Aviation Advisor, Inc
IPMS R.I.Bong Chapter Model Club
Centurion Aviation
Civil Air Patrol, Racine Composite Squadron
Dr. Sontino & Anna Bedogne DC
Delta Hawk
Educators Credit Union
Explorers Post 218
Foxy Squares
Gateway Technical College Drone Mapping
Gateway Technical College Pilot Training
Just Add Kids
Wisconsin Humane Society, Racine Campus
Racine Sport Flyers
River Bend Nature Center
Three Harbors Council, Boy Scouts of America
Young Aviators
Young Eagles



**EAA Chapter 838
www.eaa838.org
(262) 634-7575
events@eaa838.org**





AVIATION FUN FEST

Celebrating Racine's Rich Traditions of Aviation and Community

Racine, WI, August 23, 2018 – Chapter 838 of the Experimental Aircraft Association will host an aviation and community festival on Saturday, October 13, 2018. The event will include aircraft displays, free plane rides for youth 8-17, community health and safety organizations, and lots of great food. The Chapter museum will be open. All are invited to this free event.

The Aviation Fun Fest will provide fun and information about resources available in the Racine area. The famous annual Pancake Breakfast will be held from 8:00am to noon. Admission to the breakfast is \$7 for adults and \$3 for children. Our Community Partners Bar-B-Que will be from 11:00 to 2:00. Community vendors will be on display from 11:00 to 2:00 with opportunities to learn about organizations in the community ranging from the Civil Air Patrol to Chiropractic Services to the Educators Credit Union. **Youth ages 8-17 who want a free plane ride should arrive at 8:45 am.**

ABOUT EAA CHAPTER 838

EAA Chapter 838 is a non-profit organization, and is the local representation of the Experimental Aircraft Association. The Chapter promotes youth education and serves to offer youth opportunities through STEM to create a future for themselves in aviation or aerospace. The Chapter also provides an outlet for local private pilots to learn, build and fly.

Contact: Peter Bianco
EAA Chapter 838
3333 N. Green Bay Rd.
Racine, WI 53404
Phone: 262.634.7575
Email: info@eaa838.org

WAMC UPDATE FACEBOOK

I will be posting to WAMC Facebook. Keep Checking as I will announce & share sponsors, trophy designs, vendors and more. Also if any of you have photos you want shared put them on the page or send them to me and I will take care of it for you.

WEBSITE

I will have the Web Site updated and completed by August 14th. Then will keep adding information as it becomes available.

SPONSORS

I have sent out many sponsor packets and even hand delivered some. As sponsors get back to us we will be posting their names on facebook, on the web page and in our newsletter.

VENDORS

Ralphs Models will be in attendance again! Ralph brings over 1000 kits!

Susan will also be back, with her vintage aircraft models.

Thanks to both for early confirmation!

Winnebago Area Model Classic
Saturday
Nov. 3 2018
21st Annual

OSHKOSH
Scale Model Contest & Swap Meet
 Hundreds of models on display, hundreds more for sale!! Custom Awards, Raffle, Cash Prizes!!
 Event runs from 10:00 AM to 4:00 PM. Open to all Ages!
HILTON GARDEN INN - OSHKOSH, WI
 Exit 116 off Interstate 41
 1355 W. 20th Ave. Oshkosh, WI 54902

BUILD SOMETHING!!!!
 General Admission: 3\$, Kids Free!
 Model Contest: Adults 10\$, Kids Free!
 Building Seminars, Demonstrations, Raffle, Custom Awards
VENDORS SPACES 25\$ per table multi table discounts
SHOW THEME: 1968 The Times They Are A Changin'
 Automotive Challenge Class- Revell Bronco /66 Chevy Suburban
 Aircraft Challenge -VietNam: F4 Phantom/Skyraider/Huey
 Visit our website for complete rules and category listings

Web: WAMClassic.wix.com/wamc
 More Info Contact Don at WAMClassic@gmail.com
 Facebook: www.facebook.com/WAMClassic/

Last Years Event had more than 400 models entered!!!

Contest Theme: 1968 the times they are a changin.

Entries will have their own table and this is open to all genres. Aircraft, Armor, Figures, Autos, Sci-Fi and what ever else you can think to build. There will be a special Award for the Theme Award. Your model must relate to 1968 in some manner. Manufactured, major event, decommissioned what ever you can think of that relates will be eligible.

Ford Bronco vs Chevy Suburban Shootout

Select the 66 Chevy Suburban or the First Gen Revell Bronco Build it any way you want! Street Custom, Drag, Rock Crawler, 4x4, Rust Bucket or what ever you can think of. This will be an additional \$5 entry but the winner takes the money home and award. Also last years winner may have a special something to pass along! You must start with one of these kits. Creativity & craftsmanship will be rewarded!



Viet Nam Air Power Challenge Class

Select the Phantom F4, Skyraider or Huey, build it as it was flown over Viet Nam during the war years and compete for Cash prize and Award. Also last years winner may add some-thing to sweeten the pot! This class will have an additional \$5 entry fee and once again all money goes to the Winner! The kits can be any scale. But they must be one of the three listed subjects!



Family Fun!
Planes, Trains, and Automobiles
Plastic Model Kit
and
Model Railroad Swap Meet and
Show

Saturday, January 19, 2019
9AM to 3PM

St. John Lutheran Church
7214 Cass Ave
Darien, IL 60561

(approximately 6 blocks north of the I-55 and Cass Ave exit)

At least two operating model railroad layouts, over 60 vendor tables selling plastic model kits and model railroad-related items, raffle, food, and family fun for all!

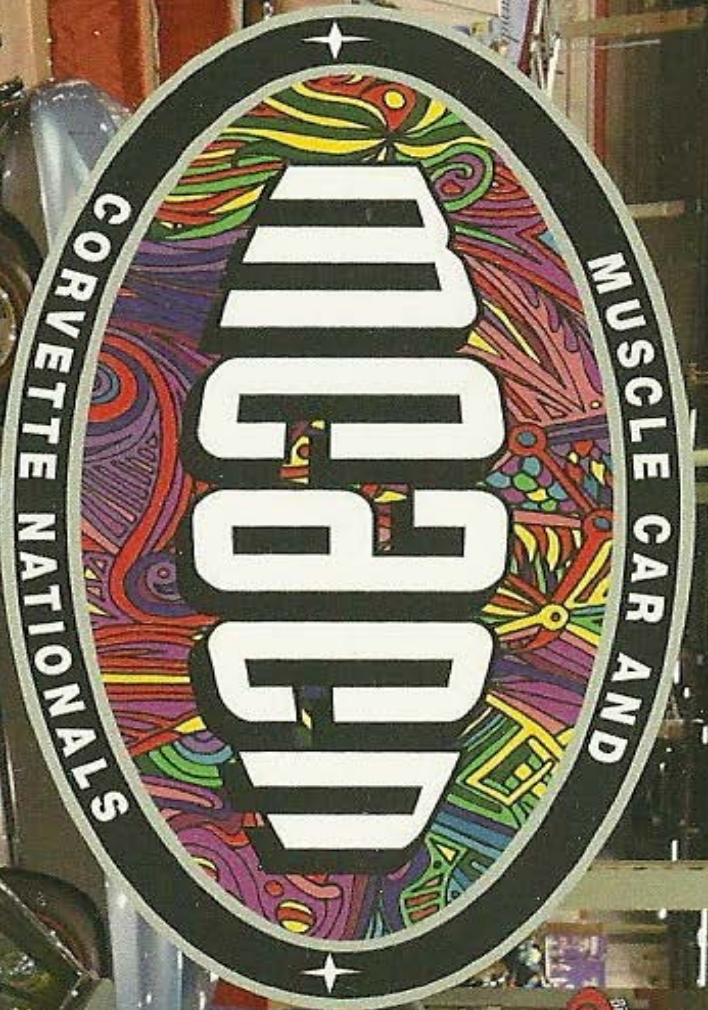
Two levels packed with plastic model and model train activities!

This is not a plastic model contest.

The building is fully handicapped accessible and has an elevator to the lower level!

\$5.00 for adults (18 years and older)

\$2.00 for children (12 to 17 years)



PRESENTING SPONSOR



TITLE SPONSOR

MECUMI
AUCTIONS

OFFICIAL CARRIER



November 17 & 18, 2018

Saturday 9am-8pm / Sunday 9am-5pm

Donald E. Stephens Convention Center - Rosemont (Greater Chicago), IL

WWW.MCAGCN.COM



Corvette
Legends



Y&A



GRAND SLAM NNL#3

TOY & MODEL SWAP MEET SATURDAY OCT. 13TH, 2018

JOHNSTOWN COMMUNITY CENTER

9937 E. COUNTY RD A

JOHNSTOWN WI (7 MILES EAST OF JANESVILLE)

SWAP MEET 9am-3pm NNL 10am-4pm

REGISTRATION TILL NOON

Theme
SEXY
60's

Sub-Theme
MOVIE
TV
CARS



DOOR PRIZES
50/50
TRY OUR
FAMOUS
TURKEY
SANDWICHES

GENERAL ADMISSION_____ \$ 5.00
NNL MODEL ENTRY+ADMISSION_ \$ 10.00
EARLY FLOOR RIGHTS_____ \$20.00

VENDORS \$35.00 PER TABLE IN ADVANCE

\$40.00 AFTER SEPT. 1 2018

VENDOR SETUP 7:30AM ...1 Helper Per Vendor

SHOW Contact:

Alex Drake 262-661-4434

mastermodeler1950@gmail.com

Bob Dahl 262-939-1499

bobspaintetc@gmail.com

Kevin Koch 920-728-3585

kookie1958@hotmail.com

VENDOR Rick Allen 262-745-5500

Contact: rickierods53@charter.net

EVERY POSSIBLE PRECAUTION WILL BE TAKEN TO INSURE THE SAFE HANDLING AND GUARDING OF CONTEST ENTRIES AND ITEMS FOR SALE. HOWEVER SOUTHERN LAKES AUTO MODELERS OR JOHNSTOWN COMMUNITY CENTER WILL NOT BE RESPONSIBLE FOR DAMAGE OR THEFT OF PROPERTY. MODELS MUST BE LEFT ON DISPLAY UNTIL 4PM! NO EARLY PACKING BY VENDORS OR CONTEST ENTRIES! MODELERS AND VENDORS AGREE TO THESE AND OTHER RULES THAT MAY BE ESTABLISHED

VENDOR PRE-REGISTRATION FORM

(ALL PRE-REGISTRATIONS ARE NON REFUNDABLE!-PLEASE PRINT LEGIBLY)

I NEED _____ TABLES X \$35.00(\$40.00 AFTER SEPT., 1st.2018)=\$ _____ (TOTAL AMOUNT ENCLOSED)

I WILL BE SELLING _____

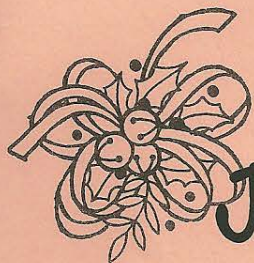
NAME _____ PHONE# _____

STREET ADDRESS _____

CITY/STATE/ZIP _____

EMAIL _____

MAKE CHECKSPAYABLE TO/MAIL TO RICK ALLEN, 350 PARKVIEW DR. DARIEN, WI 53114



Jingle Bells



Just in Time for the Holidays **CLASSIC PLASTIC**

Presents

THE "3RD" ANNUAL SCALE AUTO SWAP MEET

Sunday, December 2, 2018

9:00 am to 2:00 pm

\$1.00 GENERAL ADMISSION \$10 FLOOR RIGHTS

PLASTIC & RESIN ONLY: Model Car & Trucks, Parts,

Accessories, Decals, Promotional & Built Kits

On The Edge

68th St. & Edgerton (n/e corner)

The kitchen and bar open at 11:00 am

For More information Contact: Ron Keller 414-769-0586

or Daryl Geske 414-573-6604

Vendor Set up 8:00 am - Tables will be assigned

**LET'S HAVE FUN
THANKS!**

**\$15.00 per table paid in advance, payment must be received by November 25th.
Call for table availability, they're going fast! NO DEALER TEAR DOWN BEFORE 1PM.**

Name: _____

Address: _____ City, State: _____

Phone: _____ Number of Tables: _____

Mail registration form and check payable to:

Daryl Geske • 3224 S. 57th Street • Milwaukee, WI 53219 • Cell 414-573-6604

NOT RESPONSIBLE FOR PERSONAL INJURY, DAMAGE OR THEFT OF MERCHANDISE ON SHOW PREMISES

RUDOLPH SAYS CLASSIC PLASTIC ROCKS!

TRAIN FUN FOR EVERY GAUGE OF RAILFAN

- 70 Amazingly Detailed Operating Railroads
- 100+ "How to" Clinics & Demos
- 100+ Manufacturers & Hobby Dealers
- Historical Displays
- "All Rail" Photo Contest
- Dozens of Cottage Industries

Online
**DISCOUNT
TICKETS**
TRAINFEST.COM

47TH ANNUAL

Trainfest[®]

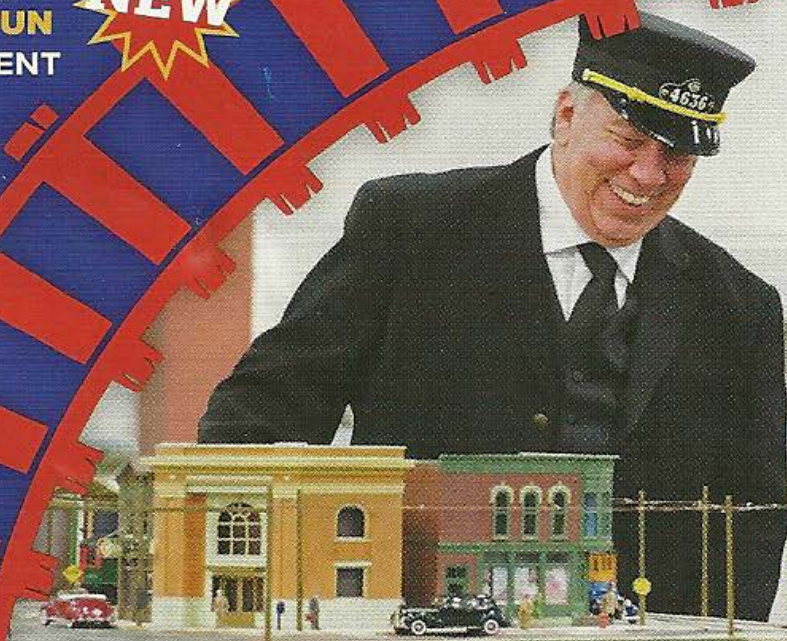
SATURDAY & SUNDAY

NOV. 10 - 11, 2018

Prime Access **TICKETS**

GET AN
EXTRA HOUR
OF TRAIN FUN
BEFORE EVENT
OPENS TO
GENERAL
PUBLIC

NEW



Operate
THE TRAINS!

Join the Fun

NOV. 10 - 11, 2018

9AM - 5PM

STATE FAIR PARK
IN MILWAUKEE, WI



Mike Dunns' Legendary...

36th Annual

Milwaukee Miniature Motors

MODEL CAR, TOY & RACING MEMORABILIA

Annual Holiday Show

December 16th, 2018

*Plastic Model Kits, Promos, Slot Cars, Hot Wheels,
Pressed Steel & Diecast Cars, Handbuilts,
New and Vintage Toys, All Types of Racing Memorabilia!*

**Waukesha County Exposition Center
★ Forum Building ★
1000 Northview Road, Waukesha, WI 53188**

Meet Dealers and Collectors from Coast to Coast!

Free Parking Door Prizes

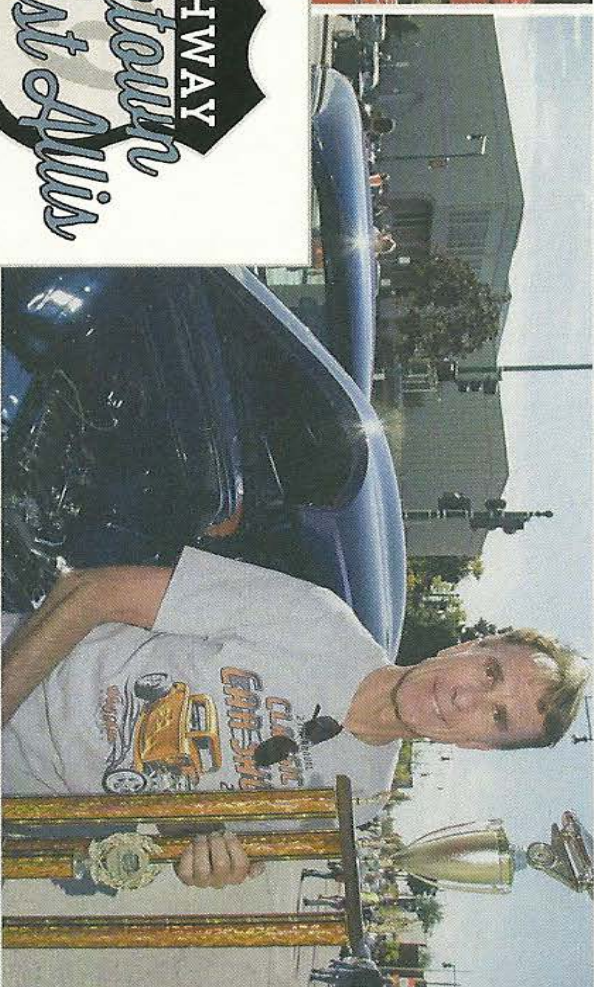
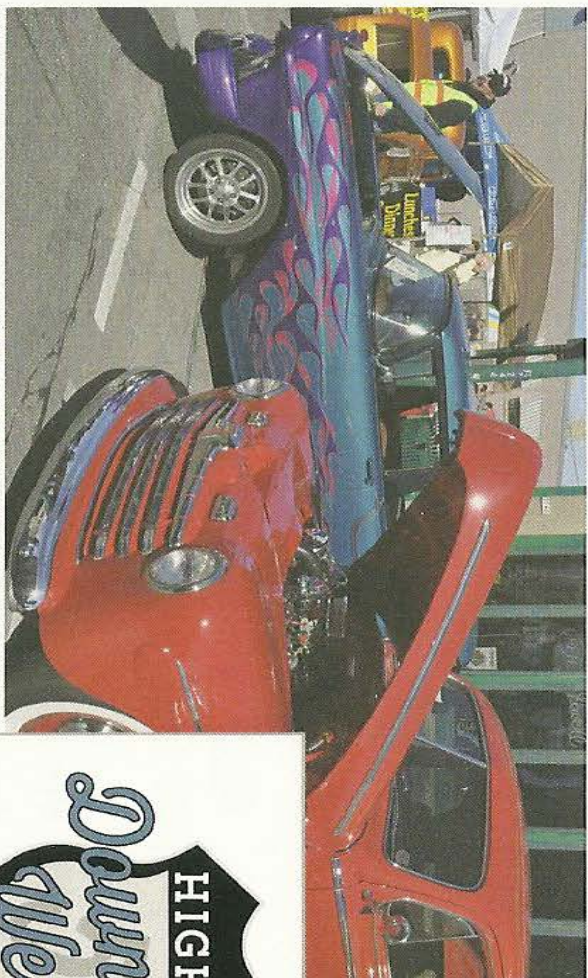
Show hours 10 am to 2 pm Admission \$5.00

Floor Rights 7:30 AM \$20

*For exhibitor information or to be placed on our mailing list contact:
Unique Events Shows, W241 N8938 Penny Lane, Sussex WI 53089
Email: unievents1@aol.com or Call Jim Welytok (262)-366-1314*

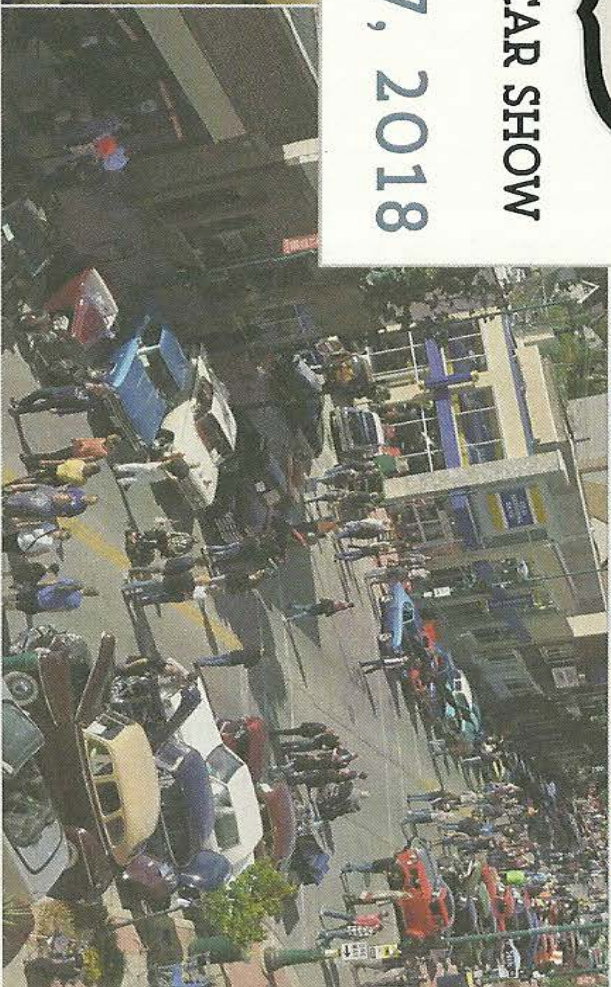
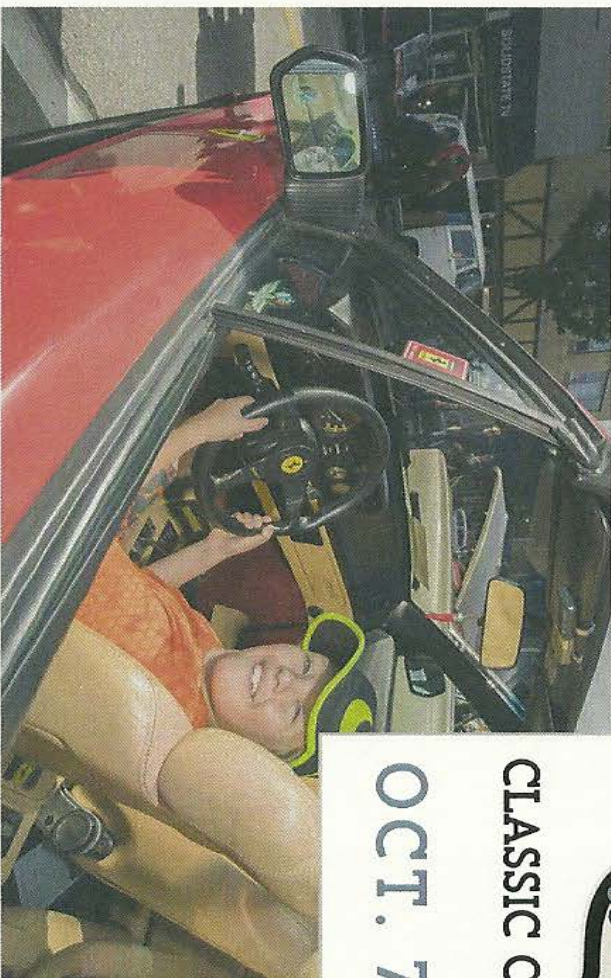
www.uniqueeventsshows.com

70TH TO 76TH & GREENFIELD AVE | 10 AM TO 3 PM



CLASSIC CAR SHOW

OCT. 7, 2018



REGISTER ONLINE WWW.WESTALLISDOWNTOWN.COM

Please support our local Hobby Shop friends!

Model Empire

7116 W Greenfield Ave
West Allis, WI 53214-4708
(414) 453-4610
www.modelempireusa.net

HobbyTown USA

1704 S 108th St, Milwaukee, WI 53214
(414) 771-5215
htuwestallis@sbcglobal.net

Happy Hobby

7125 N 76th St
Milwaukee, WI 53223-5007
(414) 461-6013
www.happyhobby.com

see our other greater Milwaukee locations

Adventure Game & Hobby

248 Maple St
Waukesha, WI 53186
(262) 548-9177
www.adventuregamesplus.com

WANTED

Any and all model military kits. If you have come to the conclusion that you will never have time to build all of your kits, now is the time to turn those unwanted kits into cash. I'm a dealer that needs inventory for kit shows. I'm only interested in complete, unbuilt examples. Thanks — Pete Gitzel

262-895-2975 home • grizzly3@wi.rr.com • 414-331-3339 cell

Military Collectibles Shop

9106 W. Greenfield Ave
West Allis, WI 53214
(414) 727-1190
militarycollectorsHQ.com

IPMS/USA MEMBERSHIP FORM

IPMS No.: _____ Name: _____
If Renewing First Middle Last

Address: _____

City: _____ State: _____ Zip: _____

Phone: _____ E-mail: _____

Signature (required by P.O.) _____

Type of Membership ☐ Adult, 1 Year: \$30 ☐ Adult, 2 Years: \$58 ☐ Adult, 3 Years: \$86

☐ Junior (Under 18 Years) \$17 ☐ Family, 1 Year: \$35 (Adult + \$5, One Set Journals) How Many Cards? _____

☐ Canada & Mexico: \$35 ☐ Other / Foreign: \$38 (Surface) Checks must be drawn on a US bank or international money order

Payment Method: ☐ Check ☐ Money Order

Chapter Affiliation, (if any): _____

If Recommended by an IPMS Member, Please List His / Her Name and Member Number:

Name: _____ IPMS No.: _____

IPMS/USA

Join or Renew Online at: www.ipmsusa.org

PO Box 56023

St. Petersburg, FL 33732-6023



Call Todd Augustine for a quote

email: taugustine@amfam.com

Tel: (414) 755-8890

Toll Free: (800) 692-6326

11616 W. North Ave Ste. D
Wauwatosa, WI 53226

!!!For Sale!!!

The bike is a 2016 ROYAL ENFIELD 500cc “Classic” It’s black & white, with gold pin striping - IMMACULATE PAINT, never dropped or abused in any way - LIKE NEW condition. NO DAMAGE!

Engine starts, & bike runs & drives a-ok.

I bought it a year ago, in 2017. It was a left over 2016 model

It ONLY HAS 30 MILES on it. Not even broken in yet.

The VIN number is : ME3FSV276GK500635

The bike has been garage stored since day of ownership

Owned by a 70 year old adult who respects bikes, &

keeps them in gorgeous condition.

Here are a list of the things I’ll include with the bike:

- Royal Enfield saddlebags
- Burly Brand “Voyager” Tank/Tail bag
- Burly Brand bike back pack - brand new
- Kryptonite type Bike locks NEW
- Bike cover NEW
- Bell Full Face “FLYING TIGERS” Helmet Brand new
- Royal Enfield leather jacket Brand new
- 2 pairs of HB brand new Kevlar jeans Leather gloves
- 2 piece Storm Rider brand new Rain suit - jacket & pants - brand new
- RRR Bike Solutions tool kit brand new
- Original Royal Enfield Owner’s Manual

CONTACT: Ed Doering

(414) 545-4467

E-mail: e_doering@yahoo.com

