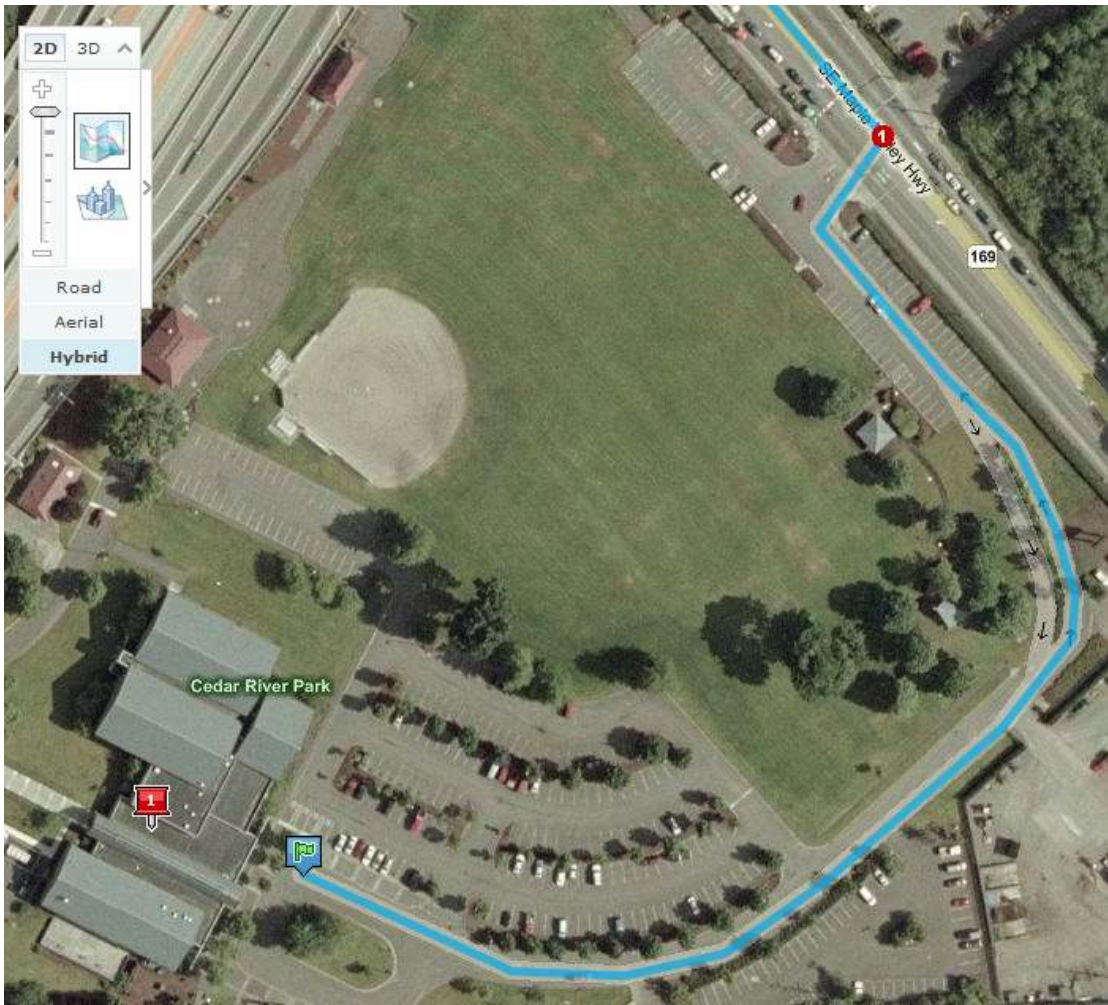


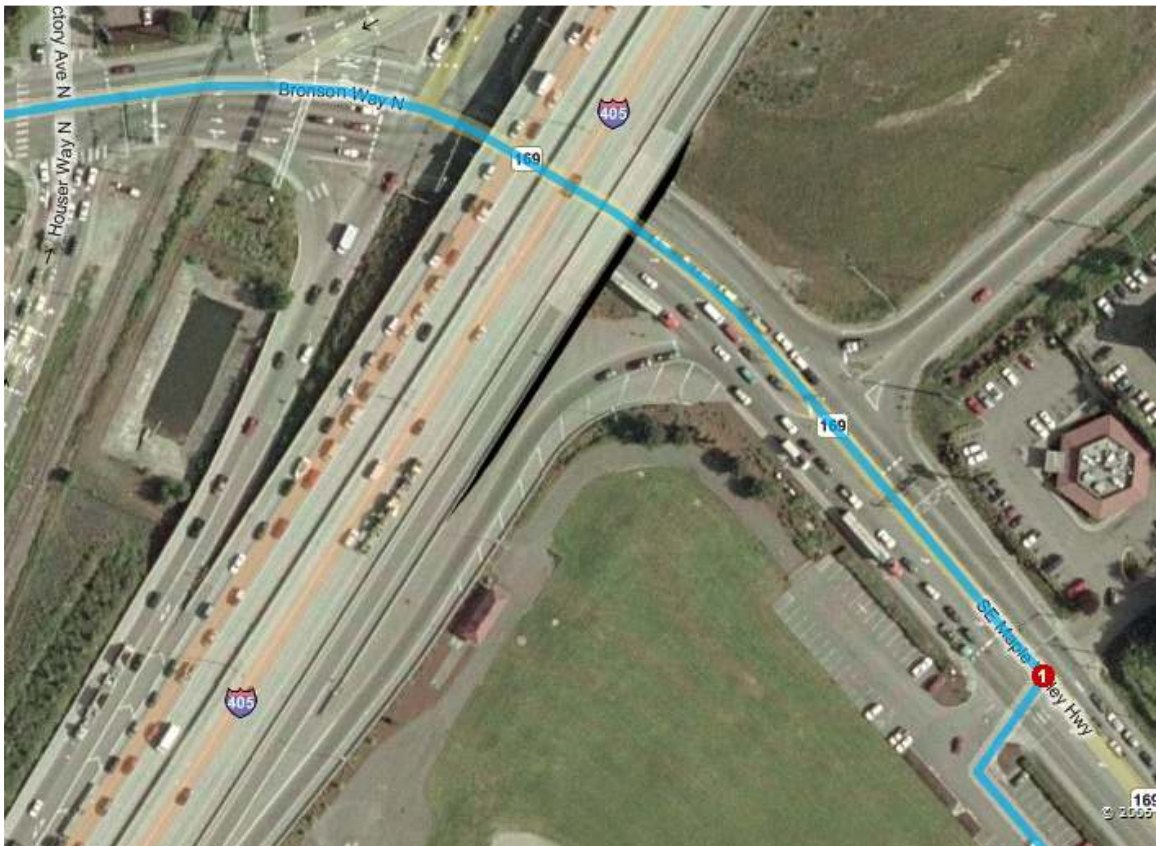
How to Get to Auxiliary Parking



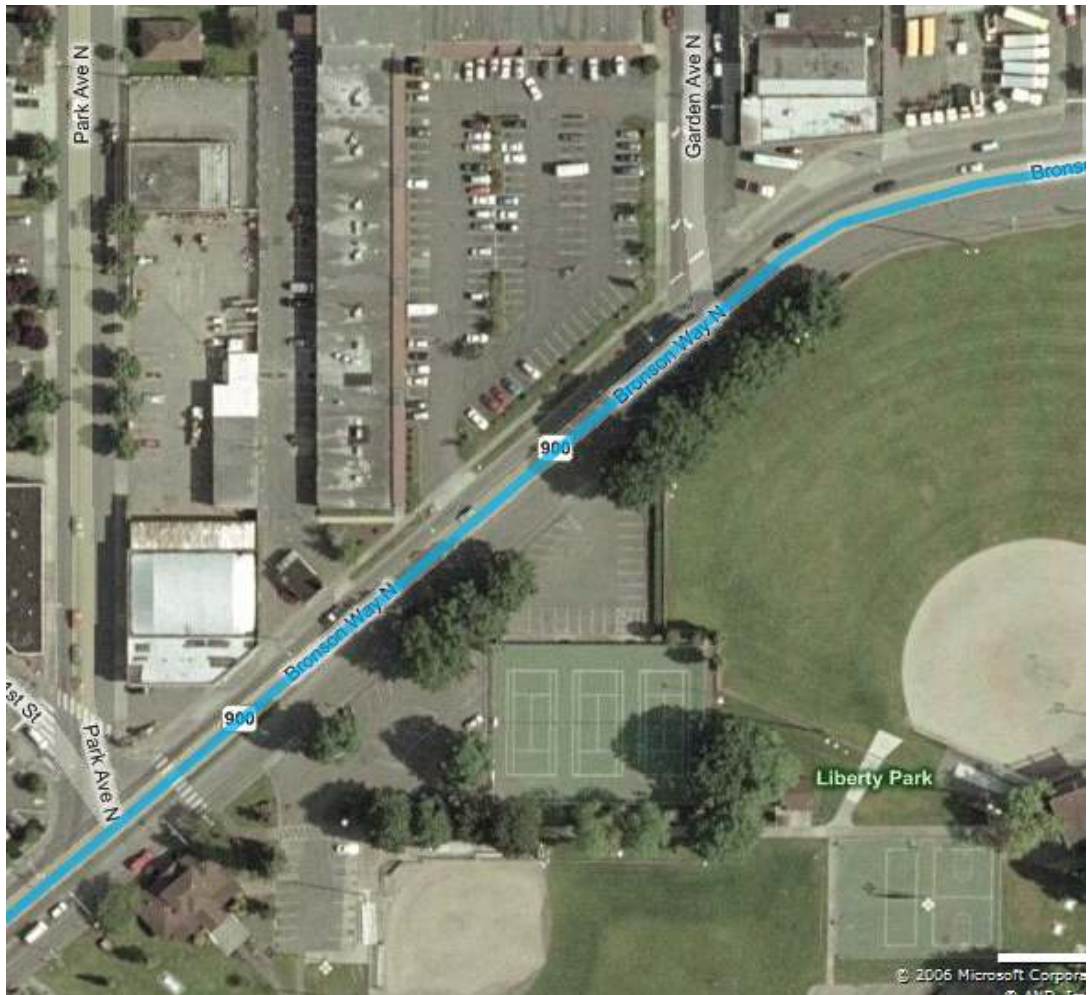
1. Renton Community Center
2. Auxiliary parking at 200 Mill
3. Footpath from 200 Mill to Renton Community Center

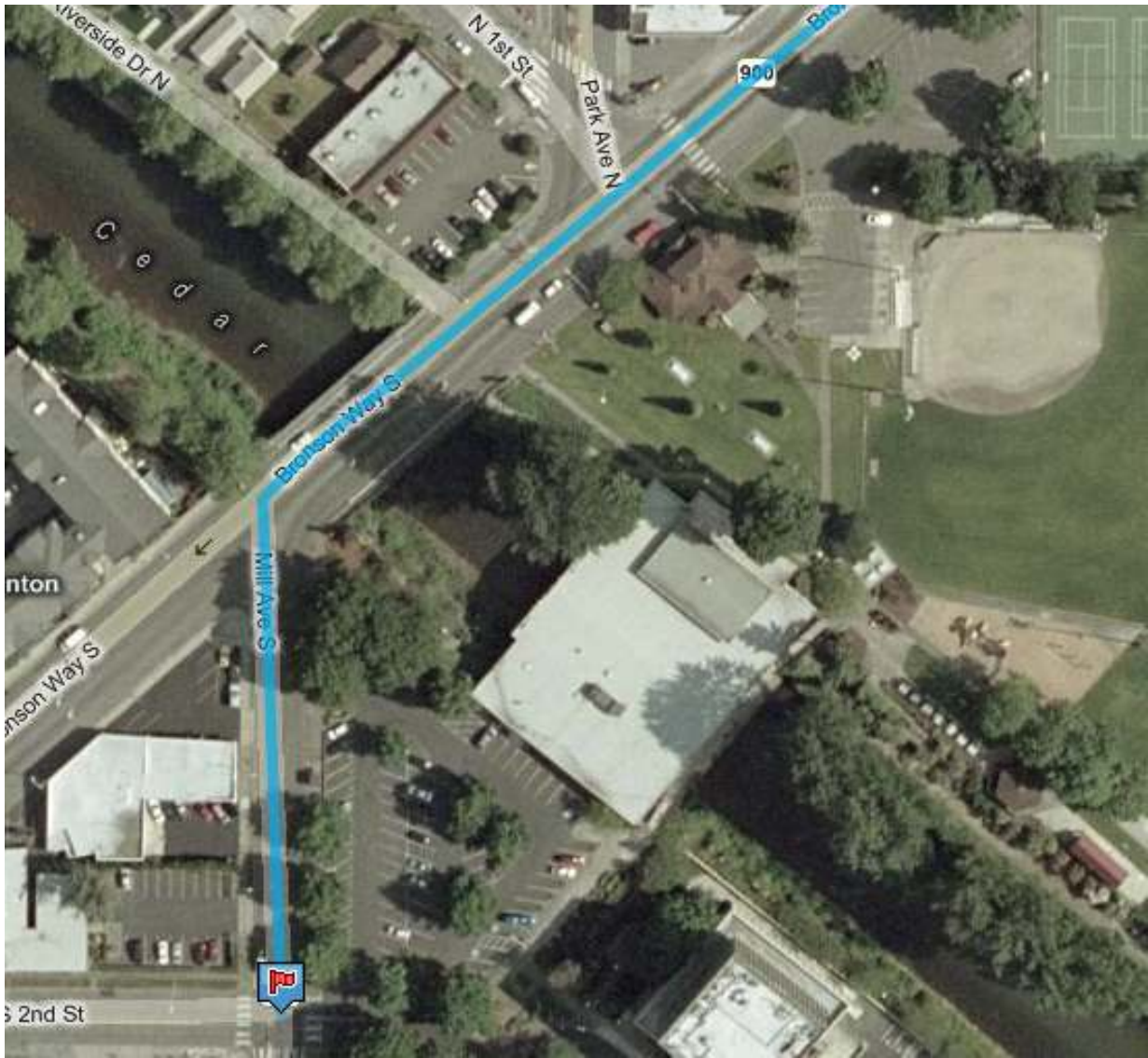


Leave the Renton Community Center parking area, turning left onto the Maple Valley Hiway.



After passing under the hiway, continue west on Bronson Way North.





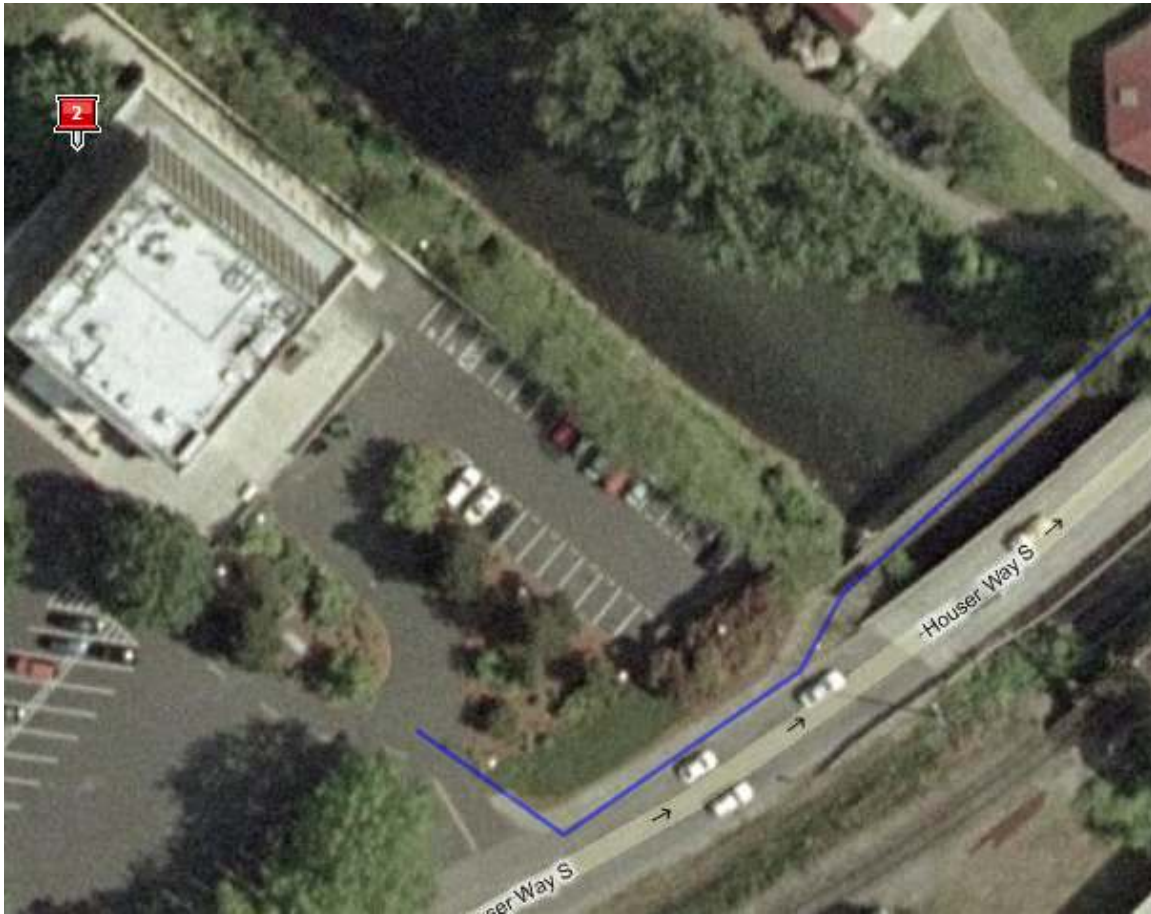
At Mill Avenue South, turn left.



At the four way stop with 2nd Ave, turn left into the 200 Mill parking area.

DO NOT PARK IN THE CONED SPACES – THEY ARE RESERVED FOR BUILDING TENANTS.

How to Get from Auxiliary Parking to Renton Community Center on Foot



Leave 200 Mill along Houser Way S, heading North-East towards the skateboard park. Cross over the Cedar River by the foot bridge.



At the marked crossing, cross Houser Way and follow the footpath under I-5 and into the south end of the Renton Community Center grounds.



